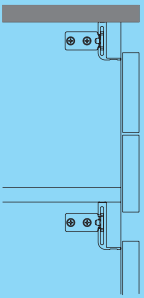
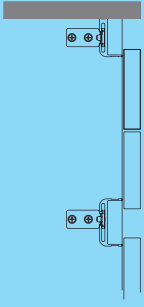
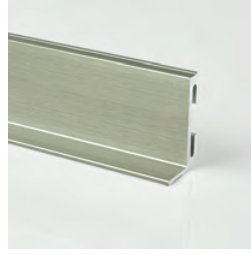


Solu

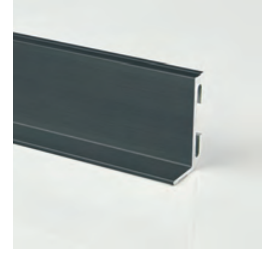
Shadowline Handle



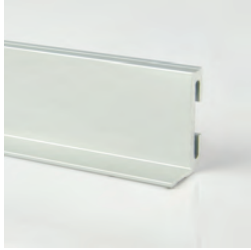
silver brushed anodized



nickel brushed anodized



black brushed anodized



Clear anodized



white powder coated



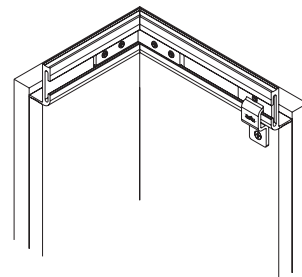
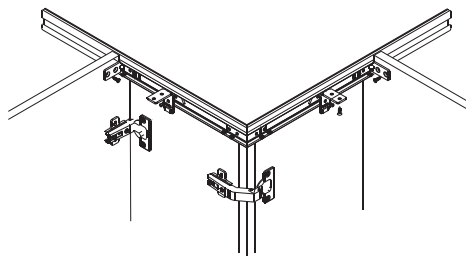
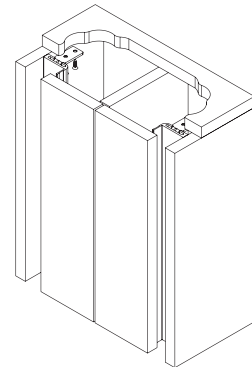
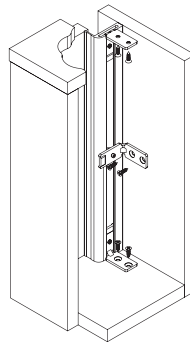
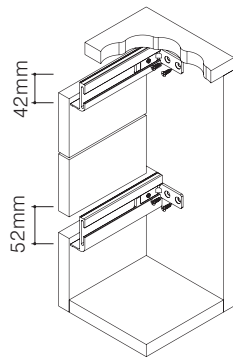
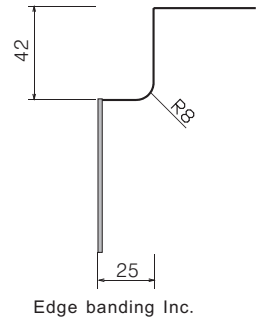
black powder coated

42mm Shadowline L shape Notch Details:

| Cat No. | Length (mm) | Finish |
|---------------|-------------|-------------------------|
| 2120. 38. 042 | 3700* | clear anodized |
| 2120. 37. 042 | 3700* | silver brushed anodized |
| 2120. 36. 042 | 3700* | black brushed anodized |
| 2120. 35. 042 | 3700* | nickel brushed anodized |
| 2120. 31. 042 | 3700* | white powder coated |
| 2120. 30. 042 | 3700* | black powder coated |

Packing: 4pcs

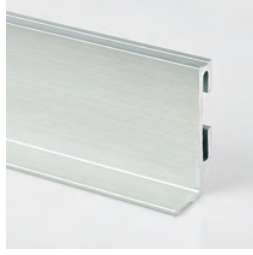
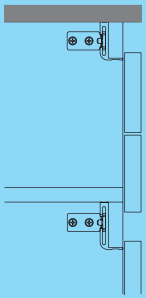
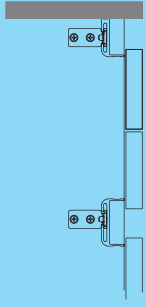
* Usable length 3630~3670mm



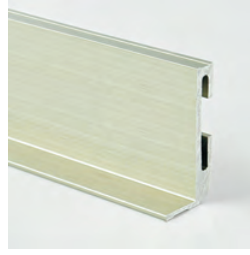
Dimensional Data not binding.
We reserve the right to alter specifications without notice.

Solu

Shadowline Handle



silver brushed anodized



nickel brushed anodized



black brushed anodized



Clear anodized



white powder coated



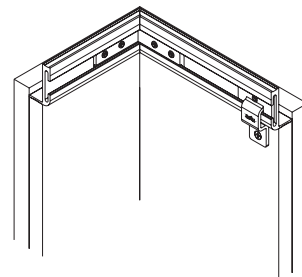
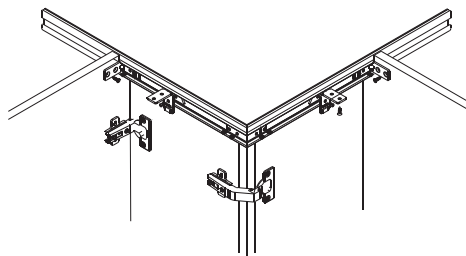
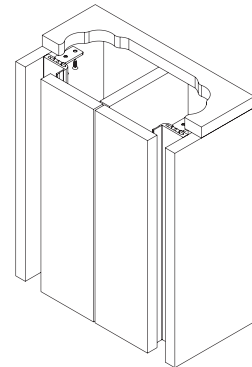
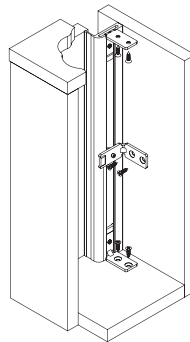
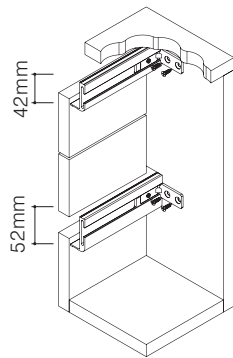
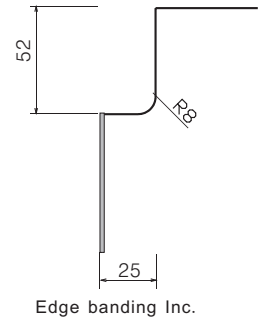
black powder coated

52mm Shadowline L shape Notch Details:

| Cat No. | Length (mm) | Finish |
|---------------|-------------|-------------------------|
| 2120. 38. 052 | 3700* | clear anodized |
| 2120. 37. 052 | 3700* | silver brushed anodized |
| 2120. 36. 052 | 3700* | black brushed anodized |
| 2120. 35. 052 | 3700* | nickel brushed anodized |
| 2120. 31. 052 | 3700* | white powder coated |
| 2120. 30. 052 | 3700* | black powder coated |

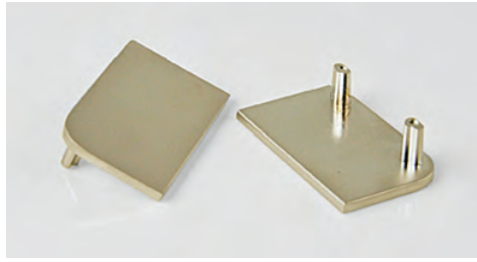
Packing: 6pcs

* Usable length 3630~3670mm

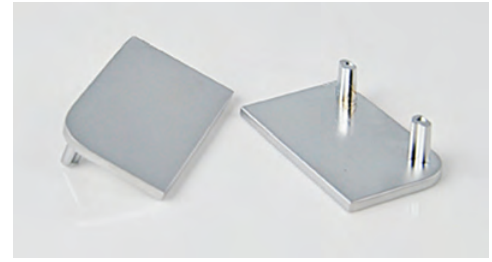


Dimensional Data not binding.
We reserve the right to alter specifications without notice.

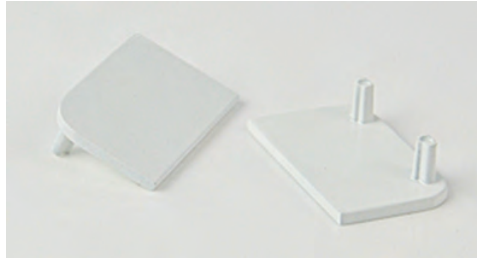
Shadowline L Shape End Caps



matt nickel
suitable for shadowline finish:
nickel brushed anodized



satin chrome
suitable for shadowline finish:
clear anodized & silver brushed anodized



white powder coated
suitable for shadowline finish:
white powder coated

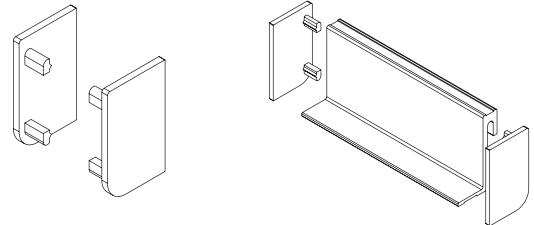


black powder coated
suitable for shadowline finish:
black brushed anodized & black powder coated

42mm End Cap

zinc alloy ;

| Cat No. | Finish |
|---------------|---------------------|
| 2120. 45. 042 | matt nickel |
| 2120. 43. 042 | satin chrome |
| 2120. 41. 042 | white powder coated |
| 2120. 40. 042 | black powder coated |

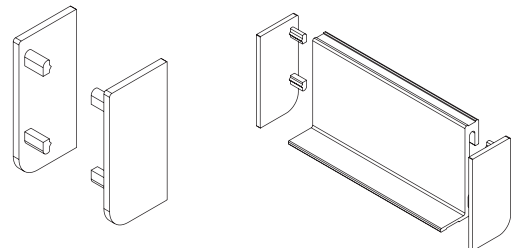


Packing: 50pairs per carton

52mm End Cap

zinc alloy ;

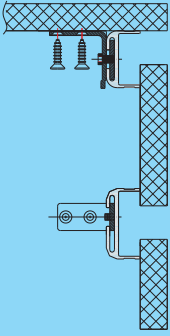
| Cat No. | Finish |
|---------------|---------------------|
| 2120. 45. 052 | matt nickel |
| 2120. 43. 052 | satin chrome |
| 2120. 41. 052 | white powder coated |
| 2120. 40. 052 | black powder coated |



Packing: 50pairs per carton

Dimensional Data not binding.
We reserve the right to alter
specifications without notice.

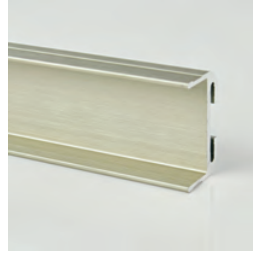
Solu



Shadowline Handle



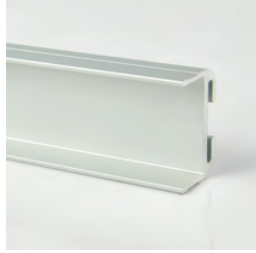
silver brushed anodized



nickel brushed anodized



black brushed anodized



Clear anodized

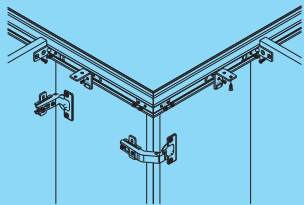
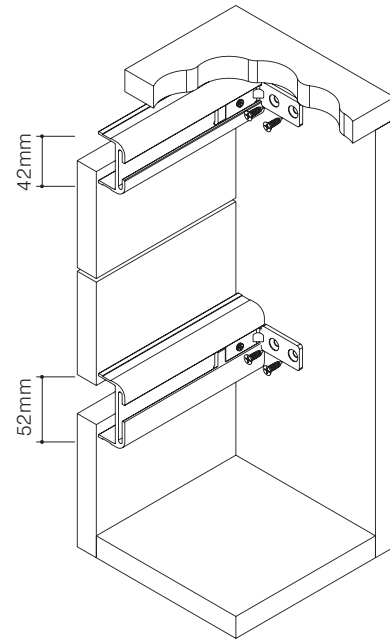
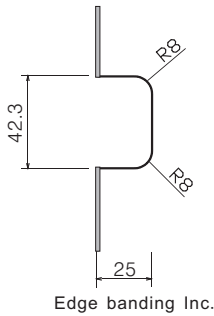
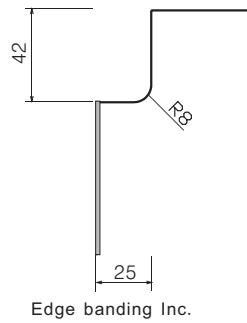


white powder coated



black powder coated

42mm Shadowline Notch Details:



Dimensional Data not binding.
We reserve the right to alter
specifications without notice.

| Cat No. | Length (mm) | Finish |
|---------------|-------------|-------------------------|
| 2110. 38. 042 | 3700* | clear anodized |
| 2110. 37. 042 | 3700* | silver brushed anodized |
| 2110. 36. 042 | 3700* | black brushed anodized |
| 2110. 35. 042 | 3700* | nickel brushed anodized |
| 2110. 31. 042 | 3700* | white powder coated |
| 2110. 30. 042 | 3700* | black powder coated |

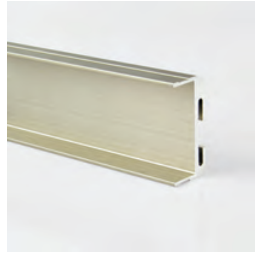
Packing: 4pcs

* Usable length 3630~3670mm

Shadowline Handle



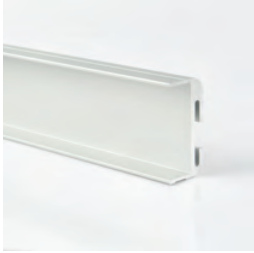
silver brushed anodized



nickel brushed anodized



black brushed anodized



Clear anodized

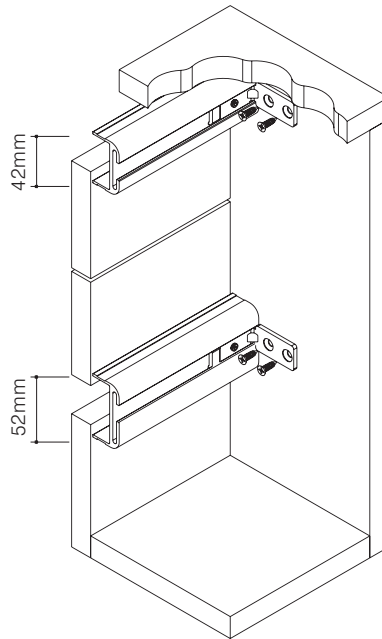
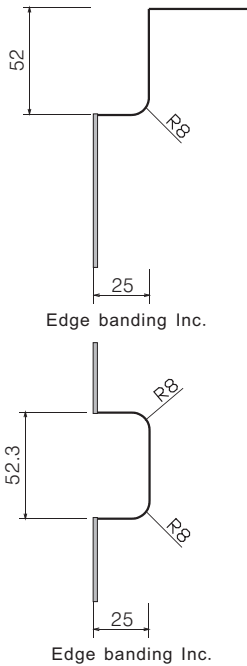


white powder coated



black powder coated

52mm Shadowline Notch Details :

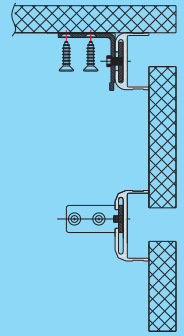


| Cat No. | Length (mm) | Finish |
|---------------|-------------|-------------------------|
| 2110. 38. 052 | 3700* | clear anodized |
| 2110. 37. 052 | 3700* | silver brushed anodized |
| 2110. 36. 052 | 3700* | black brushed anodized |
| 2110. 35. 052 | 3700* | nickel brushed anodized |
| 2110. 31. 052 | 3700* | white powder coated |
| 2110. 30. 052 | 3700* | black powder coated |

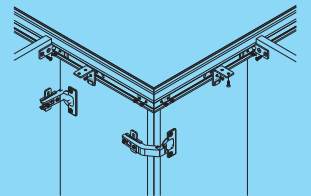
Packing : 4pcs

*Usable length 3630~3670mm

Solu



HANDLE FREE SOLUTIONS



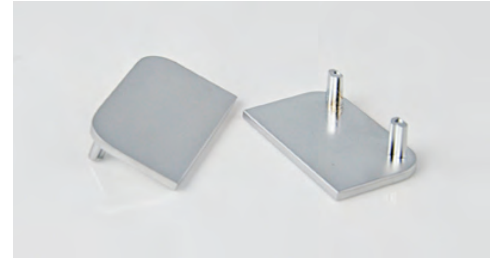
Dimensional Data not binding.
We reserve the right to alter specifications without notice.

Shadowline End Caps



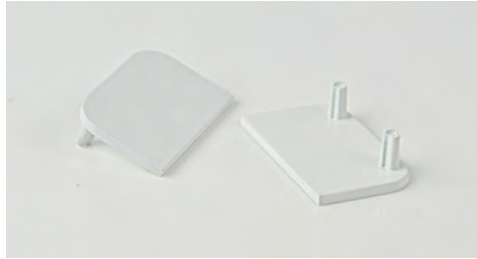
nickel-plated,matt

suitable for shadowline finish:
nickel brushed anodized



chrome-plated,matt

suitable for shadowline finish:
clear anodized & silver brushed anodized



white, powder coated

suitable for shadowline finish:
white powder coated



black powder coated

suitable for shadowline finish:
black brushed anodized & black powder coated

42mm End Cap

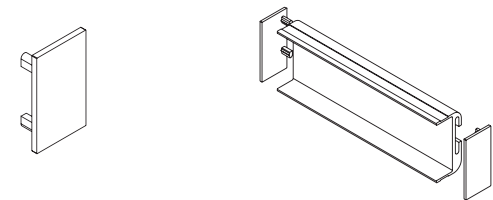
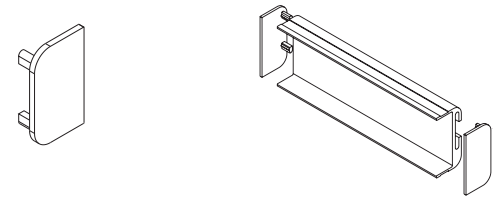
zinc alloy ;

| Cat No. | Finish |
|---------------|----------------------|
| 2110. 45. 042 | nickel-plated,matt |
| 2110. 43. 042 | chrome-plated,matt |
| 2110. 41. 042 | white, powder coated |
| 2110. 40. 042 | black, powder coated |

Packing: 100Pcs per carton

| Cat No. | Finish |
|---------------|---------------------|
| 2110. 43. 142 | satin chrome plated |

Packing: 100Pcs per carton



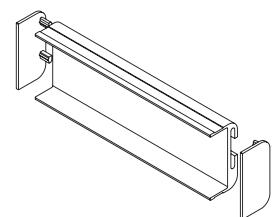
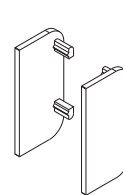
Suitable for 42mm shadowlines

52mm End Cap

zinc alloy ;

| Cat No. | Finish |
|---------------|----------------------|
| 2110. 45. 052 | nickel-plated,matt |
| 2110. 43. 052 | chrome-plated,matt |
| 2110. 41. 052 | white, powder coated |
| 2110. 40. 052 | black, powder coated |

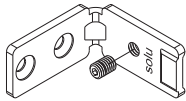
Packing: 50pairs per carton



Suitable for 52mm shadowlines

Dimensional Data not binding.
We reserve the right to alter
specifications without notice.

Shadowline Clips

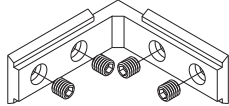


End Clip

steel, zinc-plated

| | |
|---------|-------------|
| Cat No. | 2110.57.001 |
|---------|-------------|

Packing: 100Pcs per carton

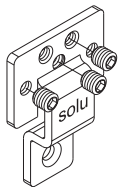


External Corner Clip

zinc alloy, chrome-plated

| | |
|---------|-------------|
| Cat No. | 2110.43.004 |
|---------|-------------|

Packing: 50Pcs per carton

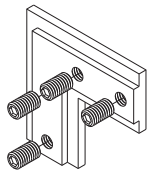


Middle Clip

steel, zinc-plated

| | |
|---------|-------------|
| Cat No. | 2110.57.005 |
|---------|-------------|

Packing: 50Pcs per carton

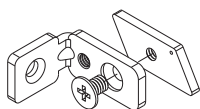


Picture Frame Clip

zinc alloy, zinc-plated

| | |
|---------|-------------|
| Cat No. | 2110.43.006 |
|---------|-------------|

Packing: 50Pcs per carton

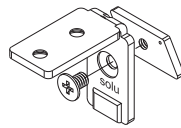


Side Clip

steel, zinc-plated

| | |
|---------|-------------|
| Cat No. | 2110.57.009 |
|---------|-------------|

Packing: 100Pcs per carton

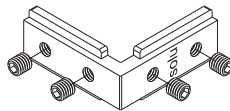


Top Clip

steel, zinc-plated

| | |
|---------|-------------|
| Cat No. | 2110.57.002 |
|---------|-------------|

Packing: 100Pcs per carton

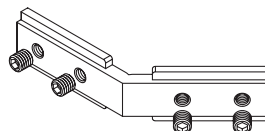


Internal Corner Clip

zinc alloy, chrome-plated

| | |
|---------|-------------|
| Cat No. | 2110.43.003 |
|---------|-------------|

Packing: 50Pcs per carton

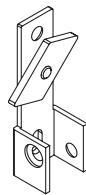


Internal Corner Clip 135°

zinc alloy, chrome-plated

| | |
|---------|-------------|
| Cat No. | 2110.43.011 |
|---------|-------------|

Packing: 50Pcs per carton

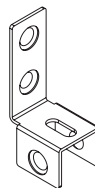


Saddle Bracket

steel, zinc-plated

| | |
|---------|-------------|
| Cat No. | 2110.57.010 |
|---------|-------------|

Packing: 50Pcs per carton



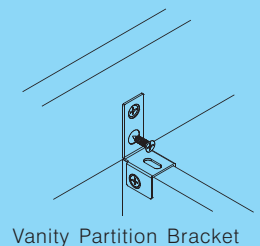
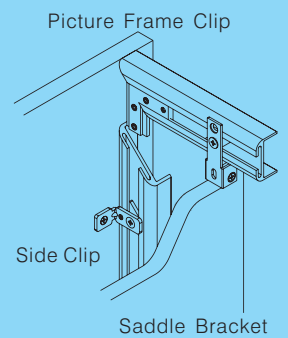
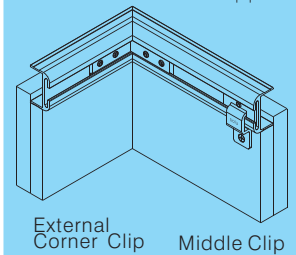
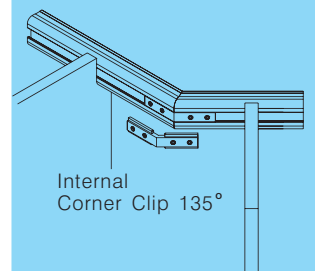
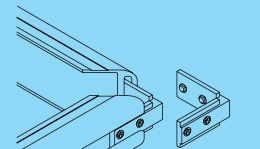
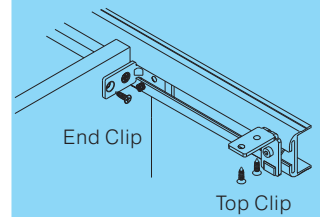
Vanity Partition Bracket

steel, zinc-plated

| | |
|---------|-------------|
| Cat No. | 2110.57.007 |
|---------|-------------|

Packing: 100Pcs per carton

Solu



HANDLE FREE SOLUTIONS

Dimensional Data not binding.
We reserve the right to alter specifications without notice.