

Solu

# **HARDWARE** SOFTWARE

Combining Design And Engineering Excellence

A modern kitchen and dining area on a rooftop terrace. The kitchen features dark grey cabinetry and a countertop with a sink and various items. The dining area has a wooden table and white chairs. The floor is made of light-colored wood planks in a herringbone pattern. The background shows a city skyline and a forested area.

# Solu

## *Combining Design And Engineering Excellence*

Solu takes pride in Australian design and engineering excellence. We develop products which intergrate beautifully with the simplicity of contemporary home and office design. We are currently developing new designs which will continue to focus on elegant design with a strong use of metals.

Solu offers a range of metal legs and handles which integrate beautifully with the simplicity of contemporary home and office design. Set against the warmth of wood, glass reflections or colourful polyurethane surfaces, Solu will add to the finish of your furniture. Solu legs are engineered with a high load capacity and of course are also height adjustable.



## HANDLE FREE SOLUTIONS– *Shadowline*

A handle free solution with a dual purpose. Developed by Solu, a handle free solution that can be used as a support rail for cabinets. The patented Shadowline System is designed by Australians for the Australian Market and comes in 2 different sizes: (i) 42mm and (ii) 52mm.

The 42mm can be used under benchtops and was designed to replace your fixing rail and could easily fit over the top of your dishwasher with little (or no adjustment) to your cabinets, It is also small enough not to take up too much storage space in your cabinet and drawers.

The 52mm can be used between drawers and is designed so you can use one shadowline between two drawers and still have enough space to put your fingers in behind the drawer front to open them.

Introduced for 2020, the Solu Shadowline range now includes the new L-shape profile and provides the same level of quality the Solu Shadowline has always delivered. Utilising Solu's unique patented clip system, all Shadowline profiles are available in six finishes:

- Clear Anodised
- Silver Brushed
- Nickel Brushed
- White Powdercoat
- Black Powdercoat
- Black Brushed





HANDLE FREE SOLUTIONS-*Finger Recess*







## PROFILE HANDLE SOLUTIONS







## FLOATING SOLUTIONS







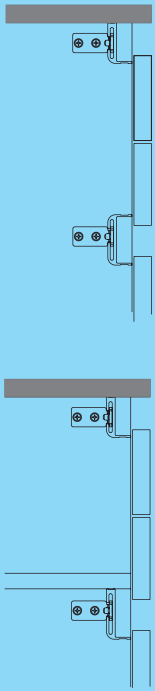
## ADJUSTABLE LEGS & HANDLES



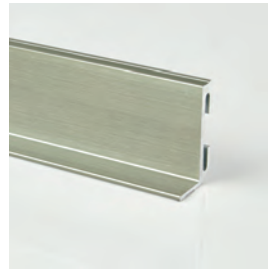




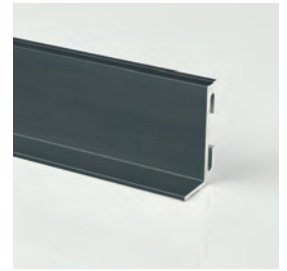
## Shadowline Handle



silver brushed anodized



nickel brushed anodized



black brushed anodized



Clear anodized



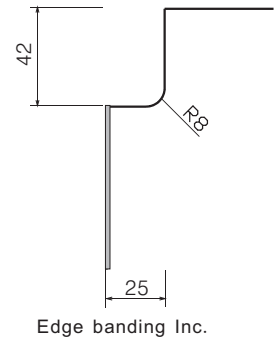
white powder coated



black powder coated

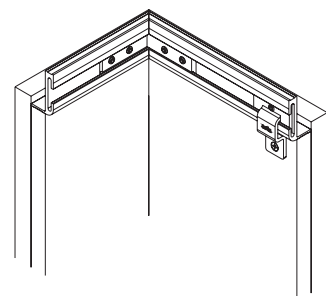
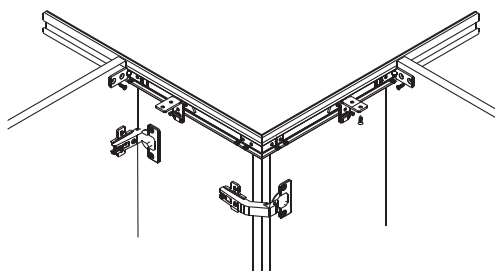
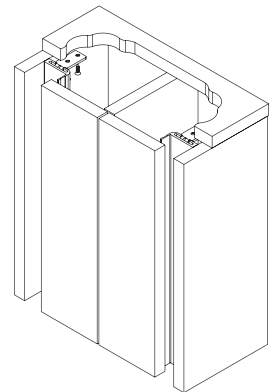
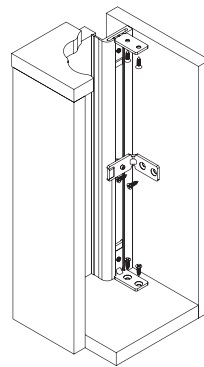
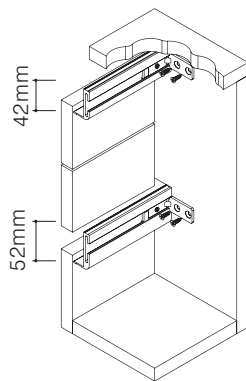
### 42mm Shadowline L shape Notch Details:

Cat No.	Length (mm)	Finish
2120. 38. 042	3700*	clear anodized
2120. 37. 042	3700*	silver brushed anodized
2120. 36. 042	3700*	black brushed anodized
2120. 35. 042	3700*	nickel brushed anodized
2120. 31. 042	3700*	white powder coated
2120. 30. 042	3700*	black powder coated



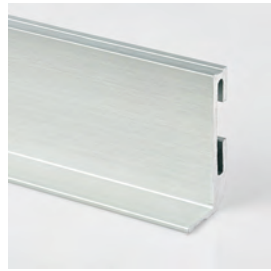
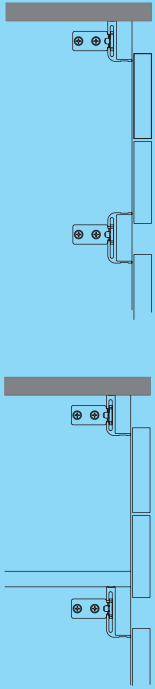
Packing: 4pcs

\* Usable length 3630~3670mm

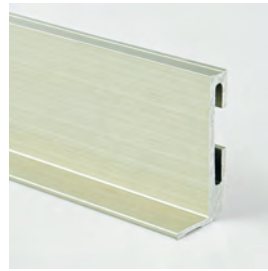


Dimensional Data not binding.  
We reserve the right to alter specifications without notice.

## Shadowline Handle



silver brushed anodized



nickel brushed anodized



black brushed anodized



Clear anodized



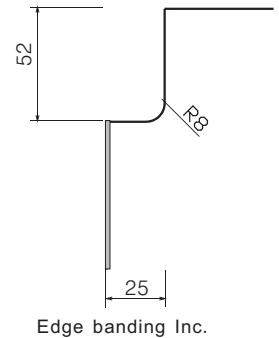
white powder coated



black powder coated

### 52mm Shadowline L shape Notch Details:

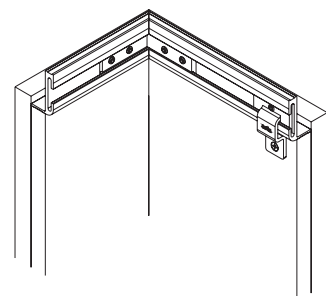
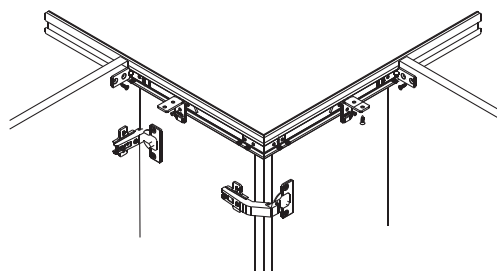
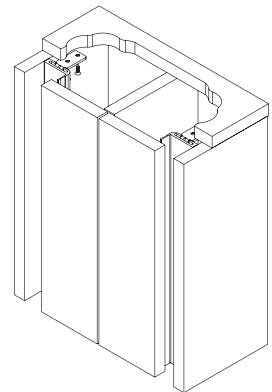
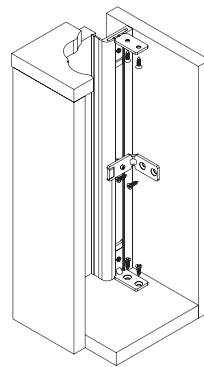
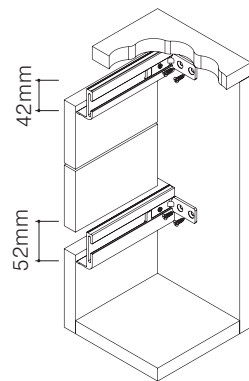
Cat No.	Length (mm)	Finish
2120. 38. 052	3700*	clear anodized
2120. 37. 052	3700*	silver brushed anodized
2120. 36. 052	3700*	black brushed anodized
2120. 35. 052	3700*	nickel brushed anodized
2120. 31. 052	3700*	white powder coated
2120. 30. 052	3700*	black powder coated



Edge banding Inc.

Packing: 6pcs

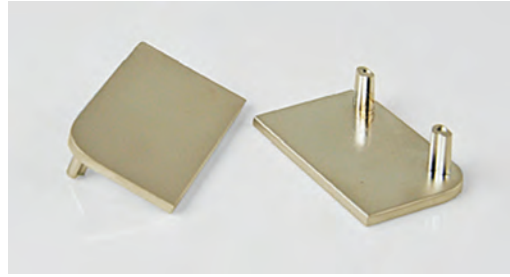
\* Usable length 3630~3670mm



Dimensional Data not binding.  
We reserve the right to alter specifications without notice.

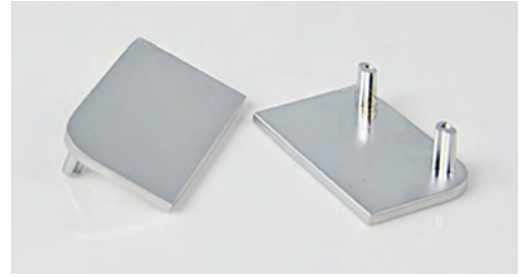


## Shadowline L Shape End Caps



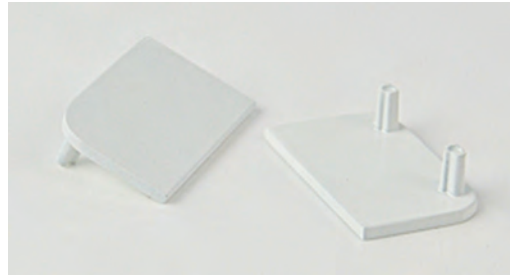
### **matt nickel**

suitable for shadowline finish:  
nickel brushed anodized



### **satin chrome**

suitable for shadowline finish:  
clear anodized & silver brushed anodized



### **white powder coated**

suitable for shadowline finish:  
white powder coated



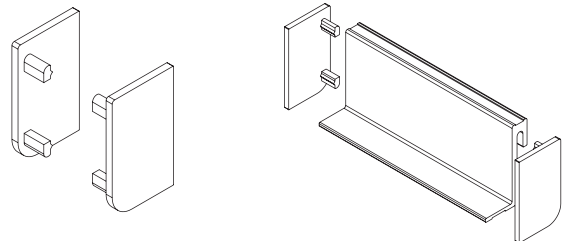
### **black powder coated**

suitable for shadowline finish:  
black brushed anodized & black powder coated

## 42mm End Cap

**zinc alloy ;**

Cat No.	Finish
2120. 45. 042	matt nickel
2120. 43. 042	satin chrome
2120. 41. 042	white powder coated
2120. 40. 042	black powder coated

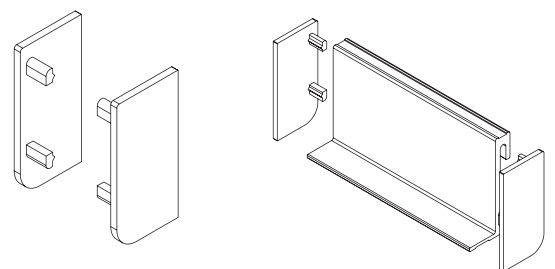


Packing: 50pairs per carton

## 52mm End Cap

**zinc alloy ;**

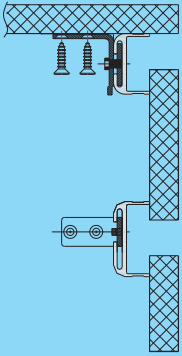
Cat No.	Finish
2120. 45. 052	matt nickel
2120. 43. 052	satin chrome
2120. 41. 052	white powder coated
2120. 40. 052	black powder coated



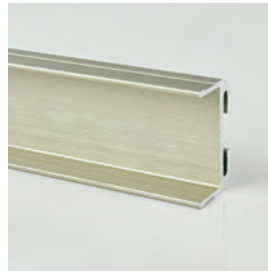
Packing: 50pairs per carton

Dimensional Data not binding.  
We reserve the right to alter  
specifications without notice.

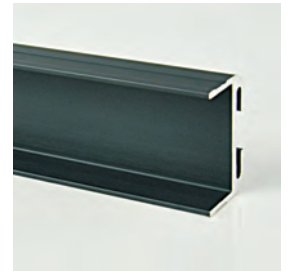
## Shadowline Handle



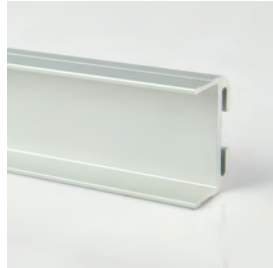
silver brushed anodized



nickel brushed anodized



black brushed anodized



Clear anodized

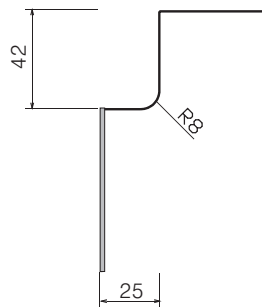


white powder coated

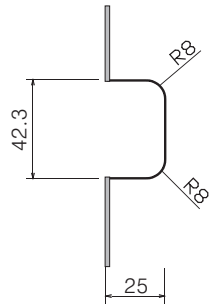


black powder coated

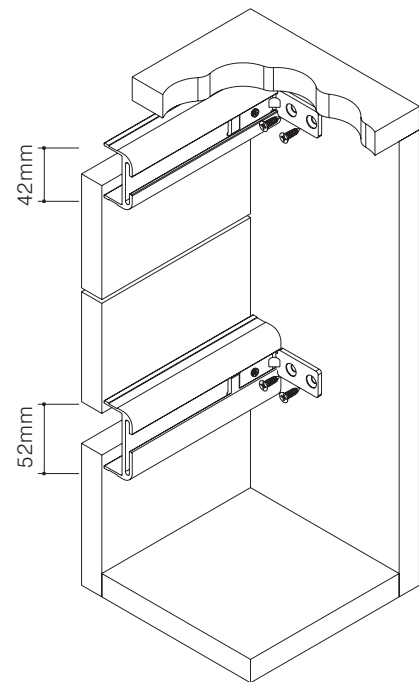
### 42mm Shadowline Notch Details:



Edge banding Inc.



Edge banding Inc.



Cat No.	Length (mm)	Finish
2110. 38. 042	3700*	clear anodized
2110. 37. 042	3700*	silver brushed anodized
2110. 36. 042	3700*	black brushed anodized
2110. 35. 042	3700*	nickel brushed anodized
2110. 31. 042	3700*	white powder coated
2110. 30. 042	3700*	black powder coated

Packing: 4pcs

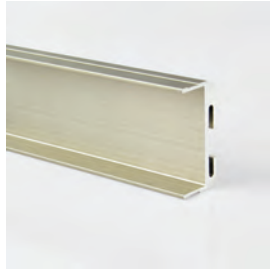
\* Usable length 3630~3670mm



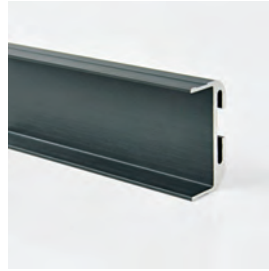
# Shadowline Handle



silver brushed anodized



nickel brushed anodized



black brushed anodized



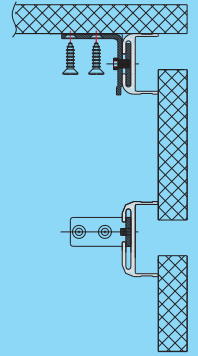
Clear anodized



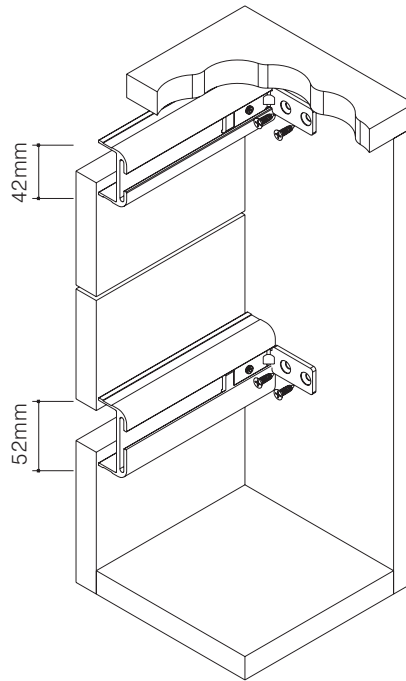
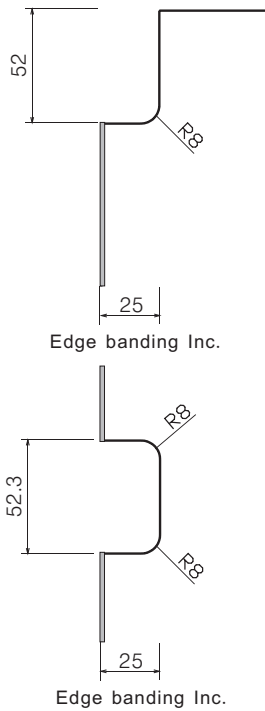
white powder coated



black powder coated



## 52mm Shadowline Notch Details:

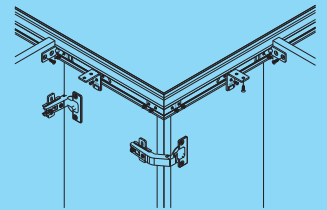


Cat No.	Length (mm)	Finish
2110. 38. 052	3700*	clear anodized
2110. 37. 052	3700*	silver brushed anodized
2110. 36. 052	3700*	black brushed anodized
2110. 35. 052	3700*	nickel brushed anodized
2110. 31. 052	3700*	white powder coated
2110. 30. 052	3700*	black powder coated

Packing: 4pcs

\*Usable length 3630~3670mm

HANDLE FREE SOLUTIONS

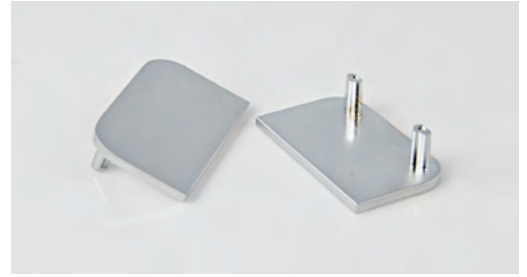


Dimensional Data not binding.  
We reserve the right to alter specifications without notice.

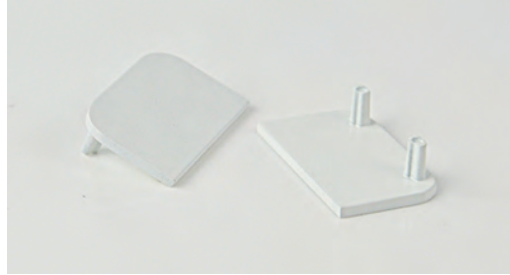
## Shadowline End Caps



**nickel-plated, matt**  
suitable for shadowline finish:  
nickel brushed anodized



**chrome-plated, matt**  
suitable for shadowline finish:  
clear anodized & silver brushed anodized



**white, powder coated**  
suitable for shadowline finish:  
white powder coated



**black powder coated**  
suitable for shadowline finish:  
black brushed anodized & black powder coated

### 42mm End Cap

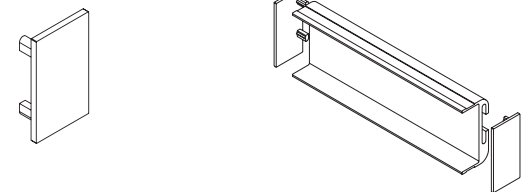
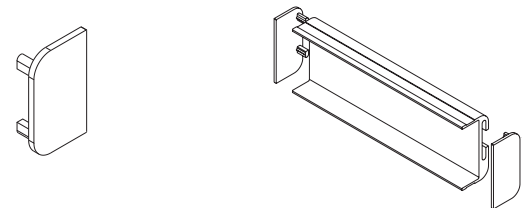
**zinc alloy ;**

Cat No.	Finish
2110. 45. 042	nickel-plated, matt
2110. 43. 042	chrome-plated, matt
2110. 41. 042	white, powder coated
2110. 40. 042	black, powder coated

Packing: 100Pcs per carton

Cat No.	Finish
2110. 43. 142	satin chrome plated

Packing: 100Pcs per carton



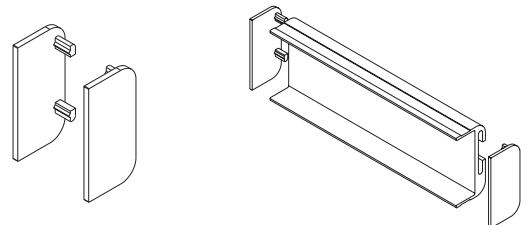
**Suitable for 42mm shadowlines**

### 52mm End Cap

**zinc alloy ;**

Cat No.	Finish
2110. 45. 052	nickel-plated, matt
2110. 43. 052	chrome-plated, matt
2110. 41. 052	white, powder coated
2110. 40. 052	black, powder coated

Packing: 50pairs per carton

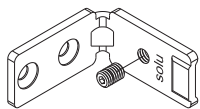


**Suitable for 52mm shadowlines**

Dimensional Data not binding.  
We reserve the right to alter  
specifications without notice.



# Shadowline Clips

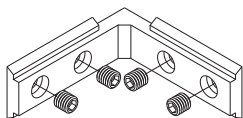


## End Clip

steel, zinc-plated

Cat No.	2110.57.001
---------	-------------

Packing: 100Pcs per carton

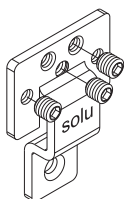


## External Corner Clip

zinc alloy, chrome-plated

Cat No.	2110.43.004
---------	-------------

Packing: 50Pcs per carton

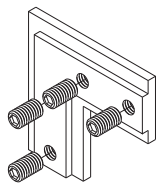


## Middle Clip

steel, zinc-plated

Cat No.	2110.57.005
---------	-------------

Packing: 50Pcs per carton

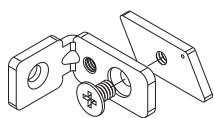


## Picture Frame Clip

zinc alloy, zinc-plated

Cat No.	2110.43.006
---------	-------------

Packing: 50Pcs per carton

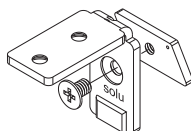


## Side Clip

steel, zinc-plated

Cat No.	2110.57.009
---------	-------------

Packing: 100Pcs per carton

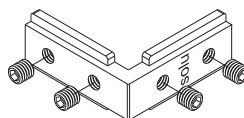


## Top Clip

steel, zinc-plated

Cat No.	2110.57.002
---------	-------------

Packing: 100Pcs per carton

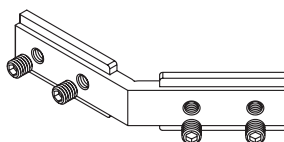


## Internal Corner Clip

zinc alloy, chrome-plated

Cat No.	2110.43.003
---------	-------------

Packing: 50Pcs per carton

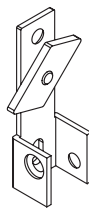


## Internal Corner Clip 135°

zinc alloy, chrome-plated

Cat No.	2110.43.011
---------	-------------

Packing: 50Pcs per carton

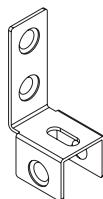


## Saddle Bracket

steel, zinc-plated

Cat No.	2110.57.010
---------	-------------

Packing: 50Pcs per carton



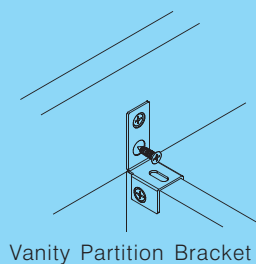
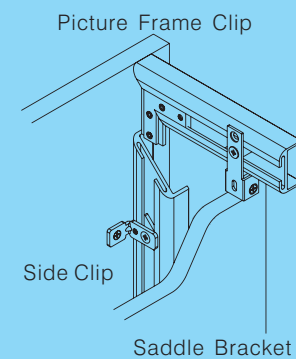
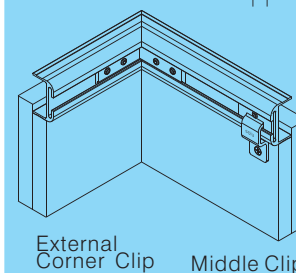
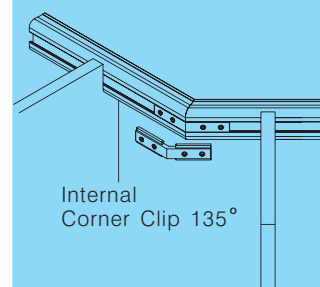
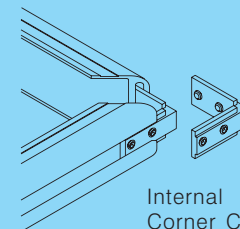
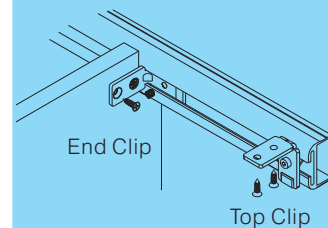
## Vanity Partition Bracket

steel, zinc-plated

Cat No.	2110.57.007
---------	-------------

Packing: 100Pcs per carton

Solu

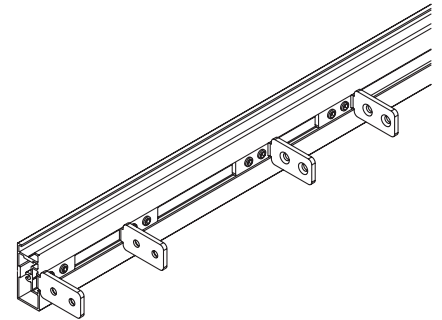
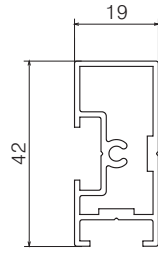
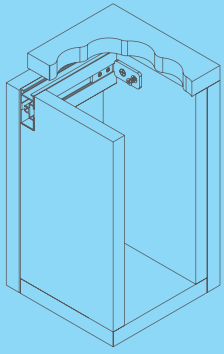


HANDLE FREE SOLUTIONS

Dimensional Data not binding.  
We reserve the right to alter specifications without notice.

## Aluminium 2×1 Rail

### Aluminium 2×1 Rail



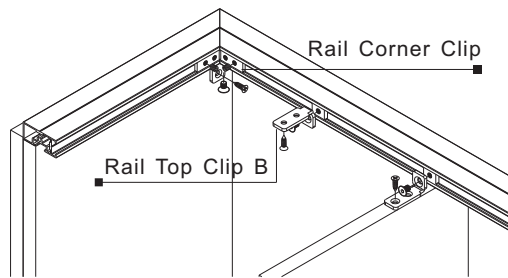
Cat No.	Length (mm)	Finish
2380. 31. 042	3700*	white, powder coated
2380. 38. 042	3700*	clear anodized
2380. 39. 042	3700*	black anodized

Packing: 6pcs

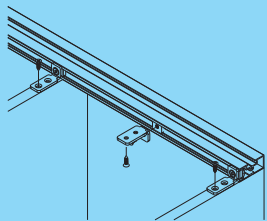
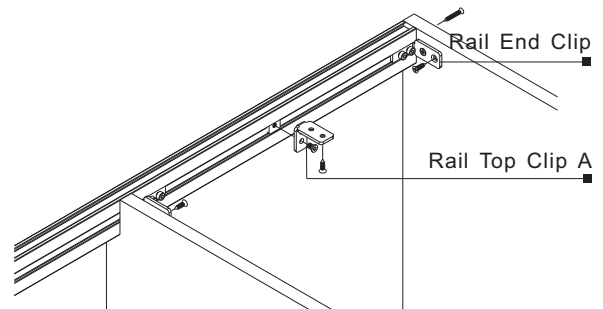
\* Usable length 3630~3670mm

### Fixing Method

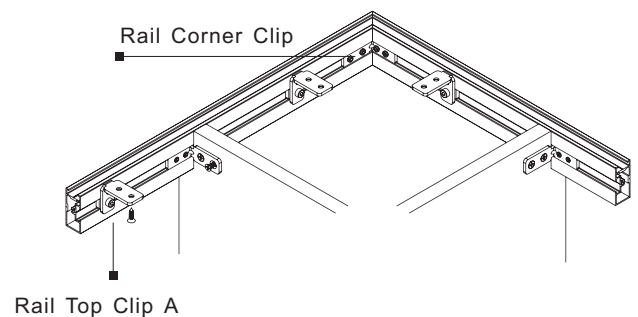
#### Flat



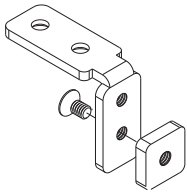
#### Inverted



Dimensional Data not binding.  
We reserve the right to alter specifications without notice.



# Aluminium 2×1 Rail Clips

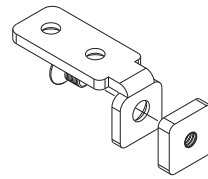


**Rail Top Clip A**

steel, zinc-plated

Cat No.	2380.57.001
---------	-------------

Packing: 100Pcs per carton

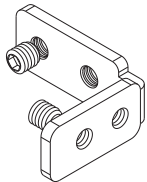


**Rail Top Clip B**

steel, zinc-plated

Cat No.	2380.57.002
---------	-------------

Packing: 100Pcs per carton

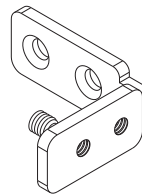


**Rail Corner Clip**

steel, zinc-plated

Cat No.	2380.57.003
---------	-------------

Packing: 100Pcs per carton



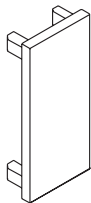
**Rail End Clip**

steel, zinc-plated

Cat No.	2380.57.004
---------	-------------

Packing: 100Pcs per carton

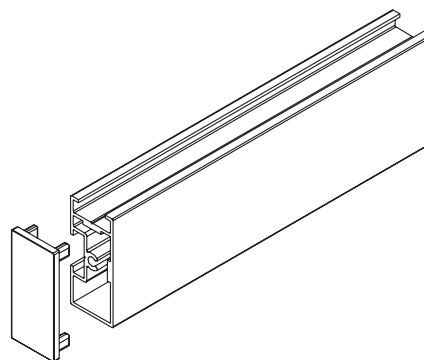
# Aluminium 2×1 Rail End Caps



zinc alloy;

Cat No.	Finish
2380. 47. 042	black plated
2380. 41. 042	white, powder coated
2380. 43. 042	chrome-plated,matt

Packing: 100Pcs per carton

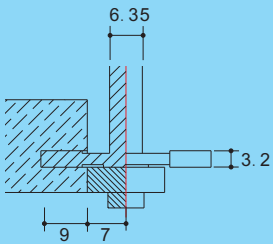
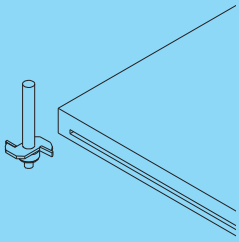


Dimensional Data not binding.  
We reserve the right to alter specifications without notice.



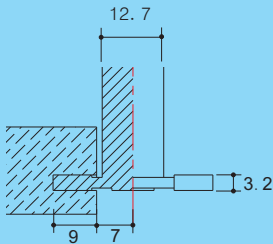
## Cabinet Finger Recess

### Router Bit



3.2mm slot bit 1/4"Shank  
32mm diameter with bearing

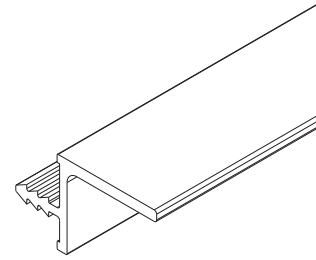
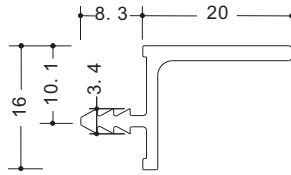
Cat No. 0140.15.032



3.2mm slot bit 1/2"Shank  
32mm diameter no bearing  
for CNC

Cat No. 0141.00.032

### 16mm Cabinet Finger Recess

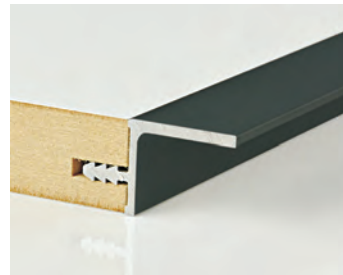


Cat No.	Length (mm) / Finish
2115. 31. 016	2500*/white powder coated
2115. 38. 016	2500*/clear anodized
2115. 39. 016	2500*/black anodized

Packing: 16Pcs per carton



White powder coated

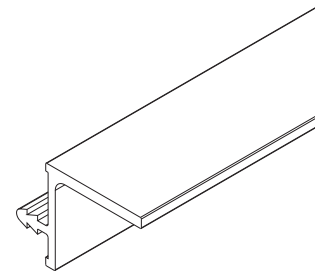
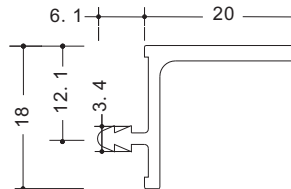


Black anodized



Clear anodized

### 18mm Cabinet Finger Recess



Cat No.	Length (mm) / Finish
2115. 31. 018	2500*/white powder coated
2115. 38. 018	2500*/clear anodized
2115. 39. 018	2500*/black anodized

Packing: 16Pcs per carton



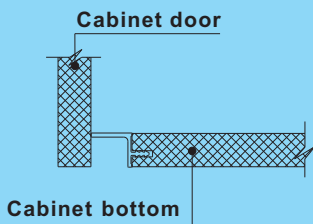
White powder coated



Black anodized



Clear anodized



Dimensional Data not binding.  
We reserve the right to alter  
specifications without notice.

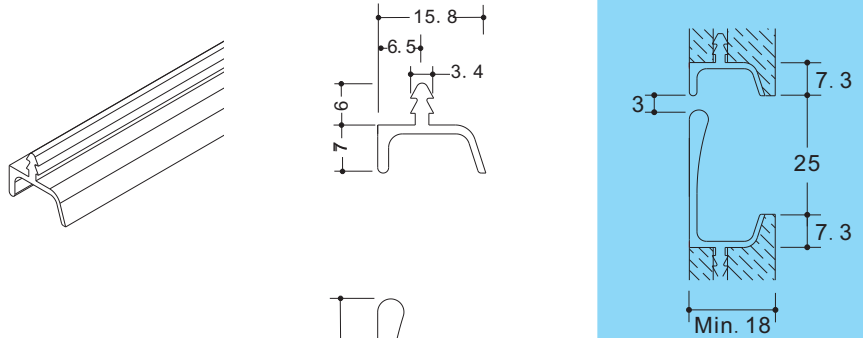
# Profile Handles

## Slimline U shape

aluminium, anodized

Cat No.	Length (mm)	Finish
2468. 39. 007	2500*	black
2468. 38. 007	2500*	clear

Packing: 30Pcs per carton

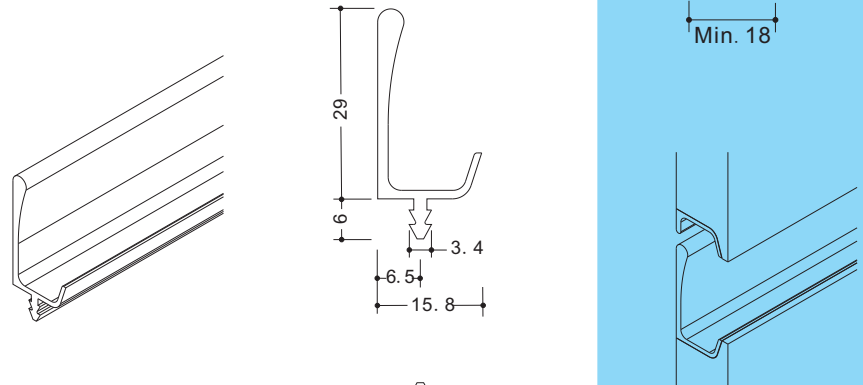


## Slimline L shape

aluminium, anodized

Cat No.	Length (mm)	Finish
2468. 39. 029	2500*	black
2468. 38. 029	2500*	clear

Packing: 20Pcs per carton

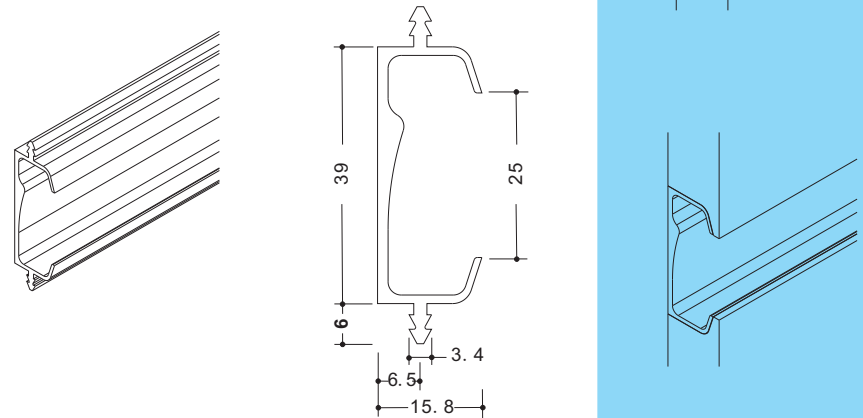


## Slimline C shape

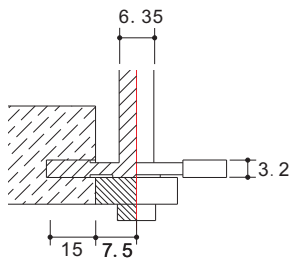
aluminium, anodized

Cat No.	Length (mm)	Finish
2468. 39. 039	2500*	black
2468. 38. 039	2500*	clear

Packing: 10Pcs per carton

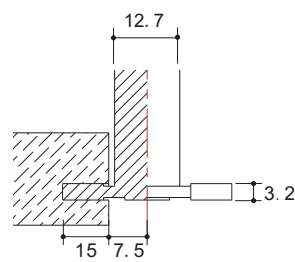


## Router Bit



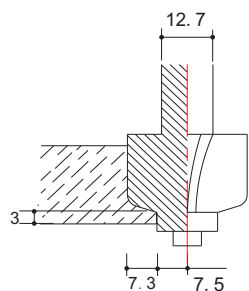
3. 2mm slot bit 1/4"Shank 45mm diameter with bearing

Cat No.	0140.15.045
---------	-------------



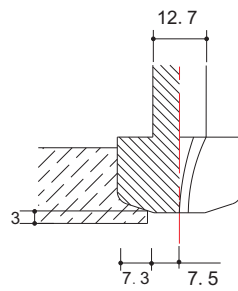
3. 2mm slot bit 1/2"Shank 45mm diameter no bearing for CNC

Cat No.	0141.00.045
---------	-------------



Slimline bit 1/2"Shank with bearing

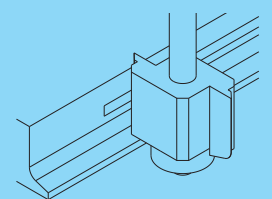
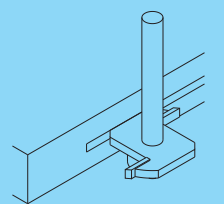
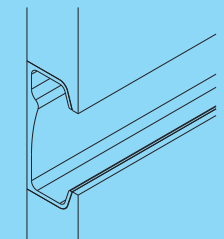
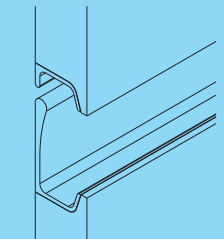
Cat No.	0151.15.029
---------	-------------



Slimline bit 1/2"Shank no bearing for CNC

Cat No.	0151.00.029
---------	-------------

\* Usable length 2430~2470mm



Dimensional Data not binding.  
We reserve the right to alter specifications without notice.

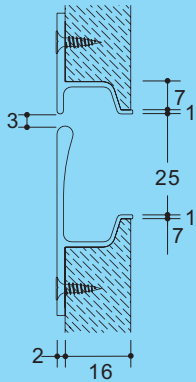
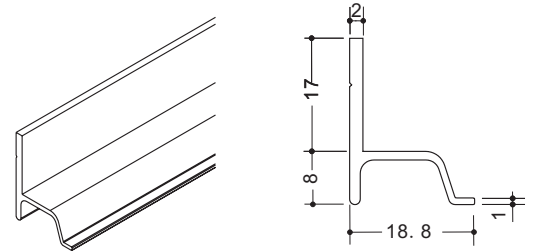
## Profile Handles

### Thinline U shape mounted with screws

aluminium, anodized

Cat No.	Length (mm)	Finish
2469. 39. 008	2500*	black anodized
2469. 38. 008	2500*	clear anodized

Packing: 20Pcs per carton



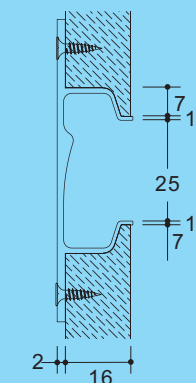
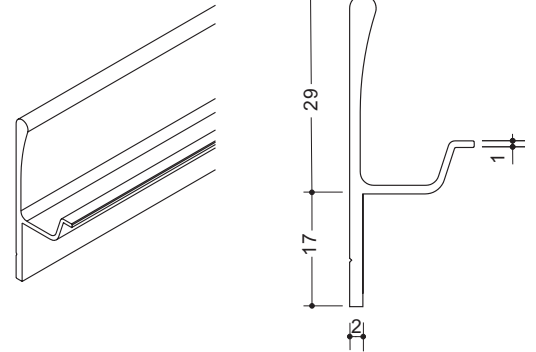
16mm Board

### Thinline L shape mounted with screws

aluminium, anodized

Cat No.	Length (mm)	Finish
2469. 39. 029	2500*	black anodized
2469. 38. 029	2500*	clear anodized

Packing: 20Pcs per carton



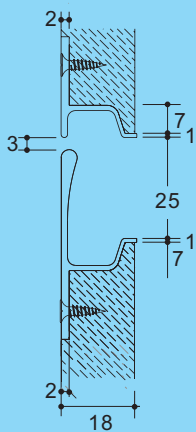
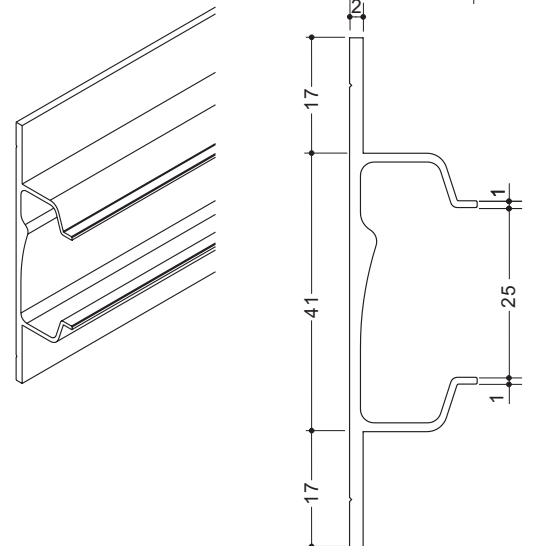
16mm Board

### Thinline C shape mounted with screws

aluminium, anodized

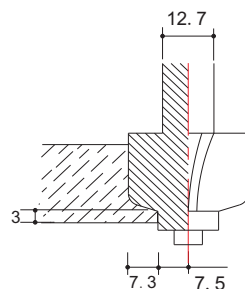
Cat No.	Length (mm)	Finish
2469. 39. 041	2500*	black anodized
2469. 38. 041	2500*	clear anodized

Packing: 10Pcs per carton



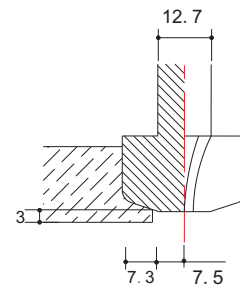
18mm Board

### Router Bit



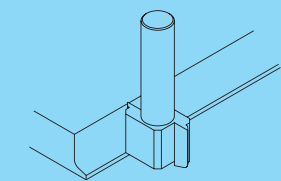
Slimline bit 1/2"Shank with bearing

Cat No.	0151.15.029
---------	-------------



Slimline bit 1/2"Shank no bearing for CNC

Cat No.	0151.00.029
---------	-------------



Dimensional Data not binding.  
We reserve the right to alter specifications without notice.

\* Usable length 2430~2470mm



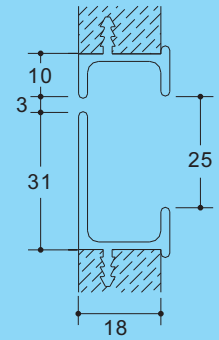
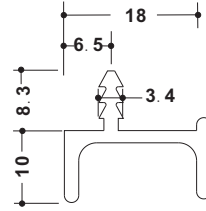
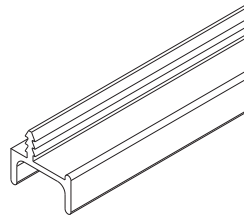
# Profile Handles

## Boldline U shape

aluminium, anodized

Cat No.	Length (mm)	Finish
2460. 39. 010	2500*	black
2460. 38. 010	2500*	clear

Packing: 20Pcs per carton

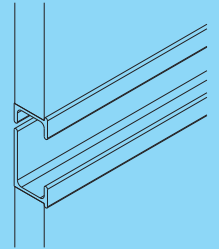
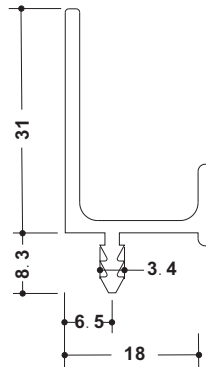
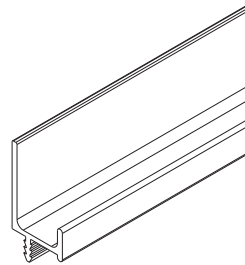


## Boldline L shape

aluminium, anodized

Cat No.	Length (mm)	Finish
2460. 39. 031	2500*	black
2460. 38. 031	2500*	clear

Packing: 20Pcs per carton

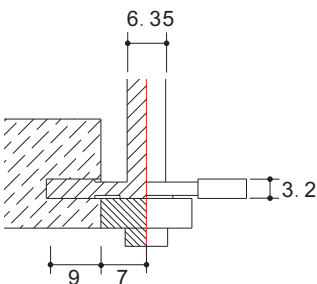
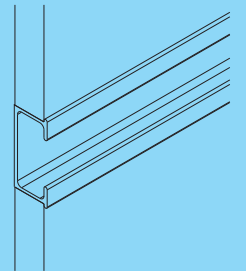
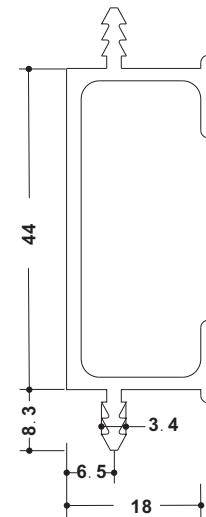
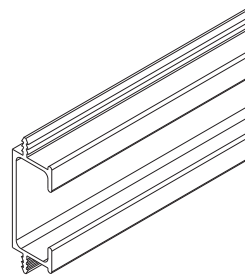


## Boldline C shape

aluminium, anodized

Cat No.	Length (mm)	Finish
2460. 39. 044	2500*	black
2460. 38. 044	2500*	clear

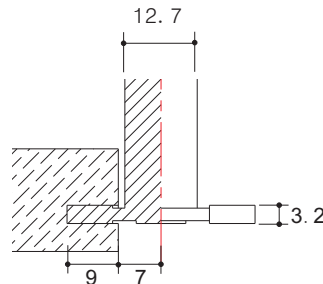
Packing: 10Pcs per carton



### Router Bit

3. 2mm slot bit 1/4"Shank  
32mm diameter with bearing

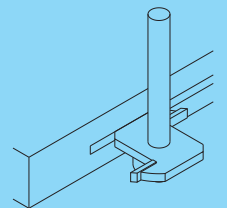
Cat No.	0140.15.032
---------	-------------



### Router Bit

3. 2mm slot bit 1/2"Shank  
32mm diameter no bearing for CNC

Cat No.	0141.00.032
---------	-------------

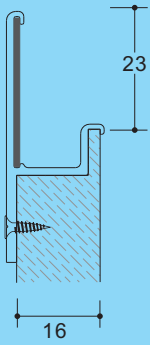


Dimensional Data not binding.  
We reserve the right to alter specifications without notice.

\* Usable length 2430~2470mm

## Profile Handles

16mm Board



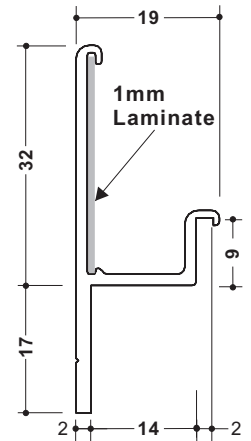
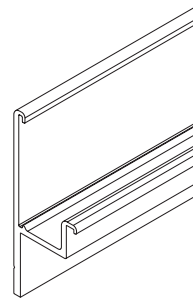
### Lamiline L shape mounted with screws

aluminium, anodized

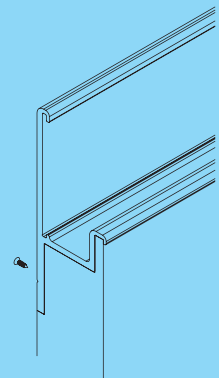
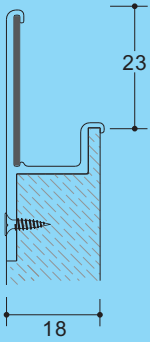
Cat No.	Length (mm)	Finish
2462. 39. 032	2500*	black anodized
2462. 38. 032	2500*	clear anodized

Packing: 20Pcs per carton

\* Recommended laminate strip width: 29mm



18mm Board



Dimensional Data not binding.  
We reserve the right to alter specifications without notice.

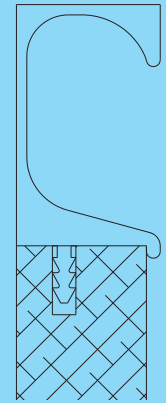
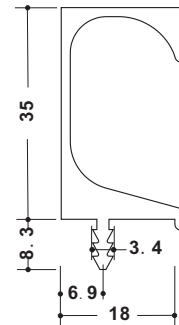
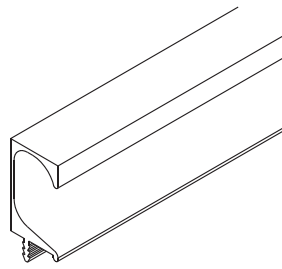
# Profile Handles

## Broadline G shape for 18mm board

aluminium, anodized

Cat No.	Length (mm)	Finish
2463. 39. 018	2500*	black
2463. 38. 018	2500*	clear

Packing: 6Pcs per carton

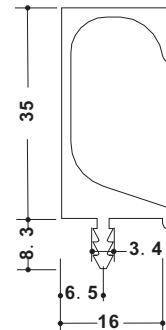
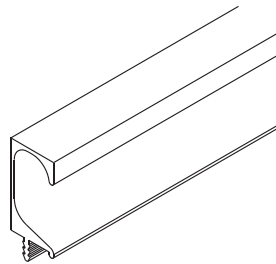


## Broadline G shape for 16mm board

aluminium, anodized

Cat No.	Length (mm)	Finish
2472. 39. 016	2500*	black
2472. 38. 016	2500*	clear

Packing: 6Pcs per carton

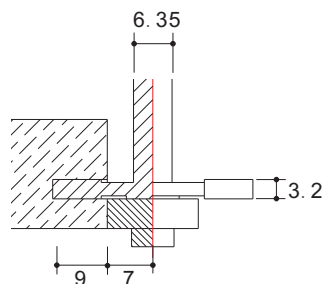
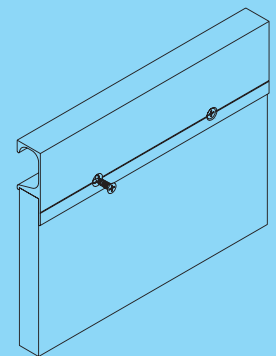
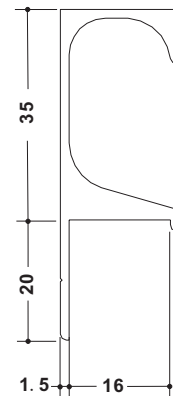
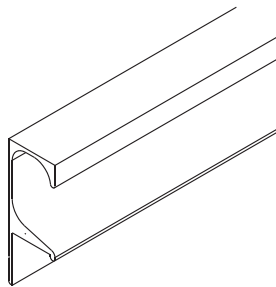


## Broadline G shape for 16mm board, mounted with screws

aluminium, anodized

Cat No.	Length (mm)	Finish
2474. 39. 016	2500*	black
2474. 38. 016	2500*	clear

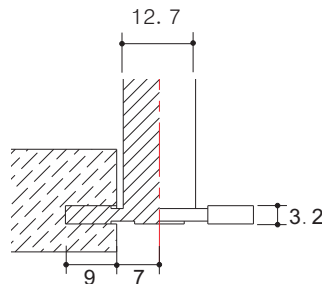
Packing: 10Pcs per carton



### Router Bit

3.2mm slot bit 1/4"Shank  
32mm diameter with bearing

Cat No.	0140.15.032
---------	-------------



### Router Bit

3.2mm slot bit 1/2"Shank  
32mm diameter no bearing for CNC

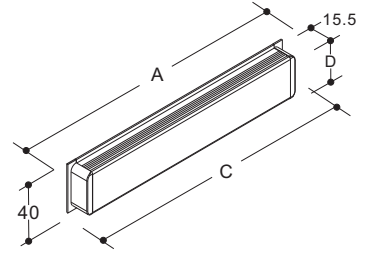
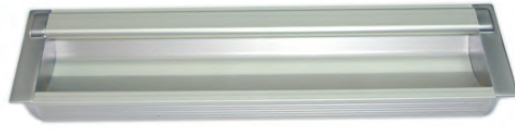
Cat No.	0141.00.032
---------	-------------

\* Usable length 2430~2470mm

Dimensional Data not binding.  
We reserve the right to alter specifications without notice.



## Recessed Handle



**Handle profile: clear, anodized**  
**End cap: zinc alloy, satin chrome**

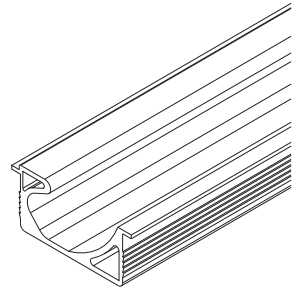
Cat No.	Size AxD	Size C
3411.38.190	189×36	183

## Extrusion Handle Profile

**aluminium, clear, anodised**

Cat No.	Length
3411.38.001	2500*

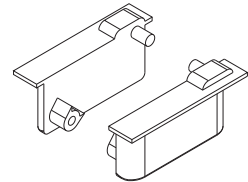
\* Usable length 2430~2470mm



## End Cap

**zinc alloy, chrome-plated, matt**

Cat No.	3411.43.002



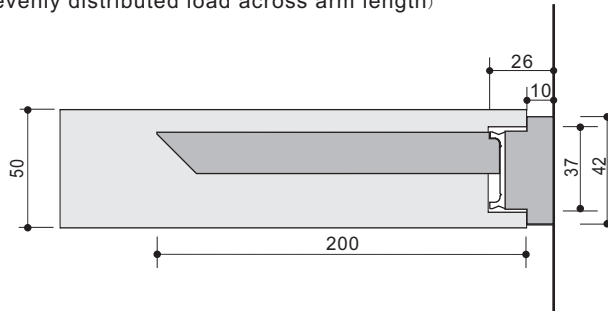
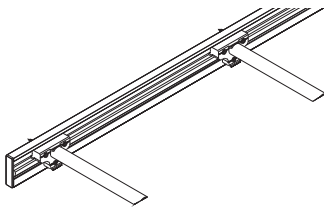
Dimensional Data not binding.  
 We reserve the right to alter specifications without notice.

# Floating Shelf Supports



## Application Specs and Features:

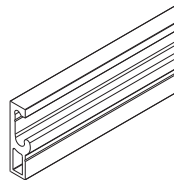
- shelf thickness: 50mm Recommended
- shelf depth: 250-300mm Recommended.
- Load capacity: 12.5Kg/Arm (evenly distributed load across arm length)



### Track

aluminium, clear, anodised

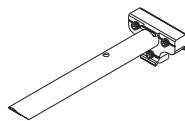
Cat No.	Length (mm)
8160.38.042	2500*



### Arm Block

Zinc alloy: nickel plated; Stainless steel, matt brush.

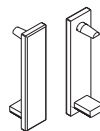
Cat No.	Unit
8160.37.190	pcs



### Track End Cap

Zinc alloy: chrome-plated, matt.

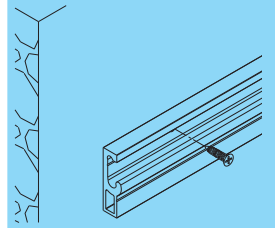
Cat No.	Unit
8160.43.001	pair



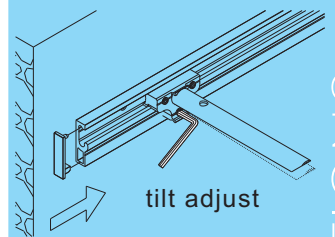
\* Usable length 2430~2470mm

Solu

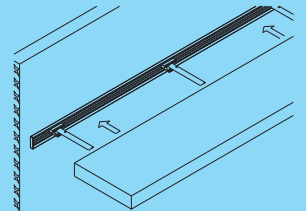
step 1



step 2



step 3



FLOATING SOLUTIONS



Dimensional Data not binding.  
We reserve the right to alter specifications without notice.

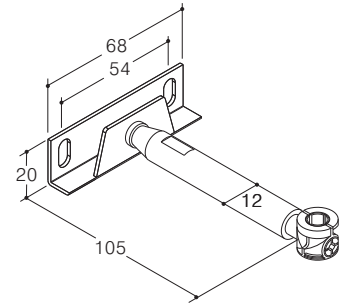
## Floating Shelf Supports

### Shelf Support

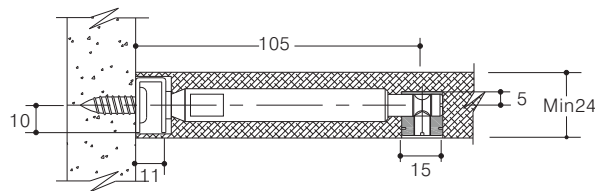
steel, galvanized  
shelf depth: max. 300mm  
distance between shelf supports: max 700mm

Cat No.	8122. 57. 105
---------	---------------

Packing: 50pcs per carton



### Fixing Method

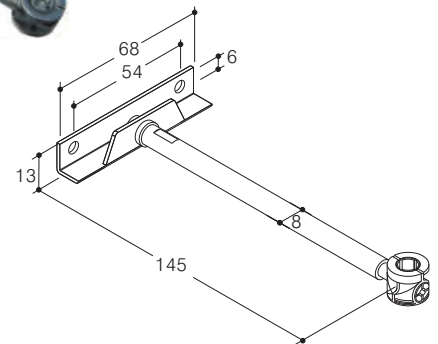


### Shelf Support

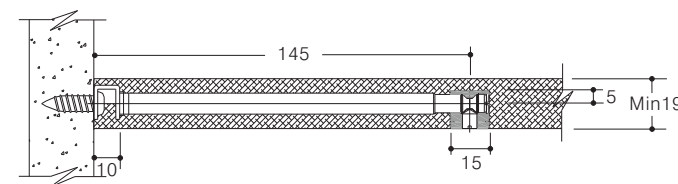
steel, galvanized  
shelf depth: max. 300mm  
distance between shelf supports: max 550mm

Cat No.	8122. 57. 145
---------	---------------

Packing: 50pcs per carton



### Fixing Method



Dimensional Data not binding.  
We reserve the right to alter specifications without notice.

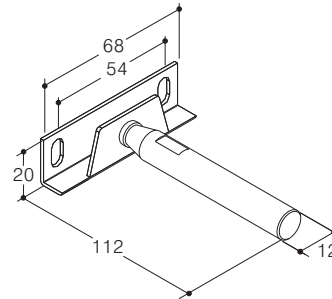
# Floating Shelf Supports

## Shelf Support

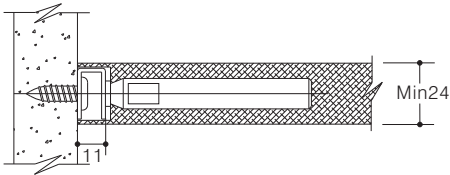
steel, galvanized  
shelf depth: max. 300mm  
distance between shelf supports: max 700mm

Cat No.	8121. 57. 112
---------	---------------

Packing: 50pcs per carton



## Fixing Method

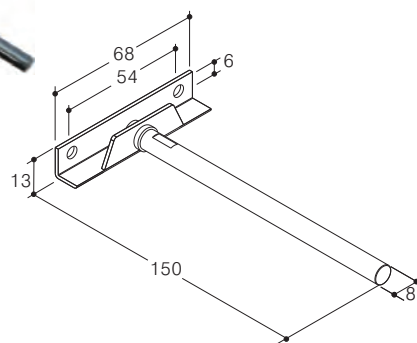


## Shelf Support

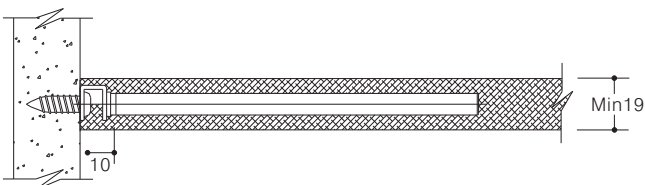
steel, galvanized  
shelf depth: max. 300mm  
distance between shelf supports: max 550mm

Cat No.	8121. 57. 150
---------	---------------

Packing: 50pcs per carton



## Fixing Method



Dimensional Data not binding.  
We reserve the right to alter specifications without notice.



## Floating Shelf Supports

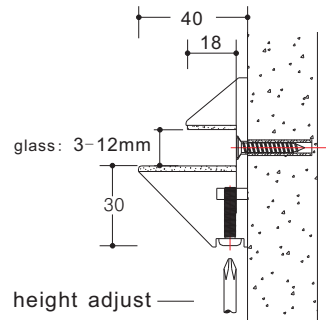
### Glass Shelf Bracket



**zinc alloy, nickel-plated**  
**glass shelf depth: max. 250mm**  
**distance between shelf supports: max 550mm**

Cat No.	8135.46.040
---------	-------------

Packing: 20set per carton



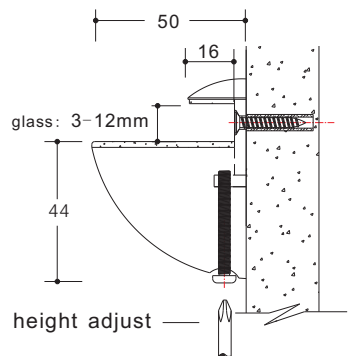
### Glass Shelf Bracket



**zinc alloy, nickel-plated**  
**glass shelf depth: max. 250mm**  
**distance between shelf supports: max 550mm**

Cat No.	8136.46.050
---------	-------------

Packing: 20set per carton



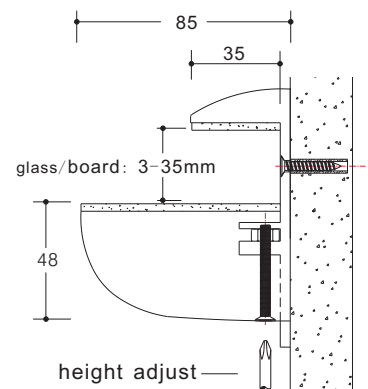
### Shelf Bracket



**zinc alloy, nickel-plated**  
**glass shelf depth: max. 3000mm**  
**distance between shelf supports: max 700mm**

Cat No.	8137.46.085
---------	-------------

Packing: 10set per carton



Dimensional Data not binding.  
 We reserve the right to alter specifications without notice.

# Floating Cabinet Supporter Kit



## FC supporter

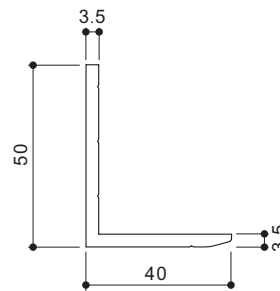
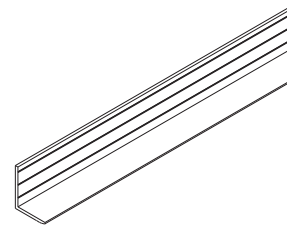
aluminium, clear, anodised

Cat No.	Length (mm)
8160. 38. 050	4200*

Packing: 1set

Load capacity: Max: 50Kg/M

Note: Additional clips and cap can be ordered separately.



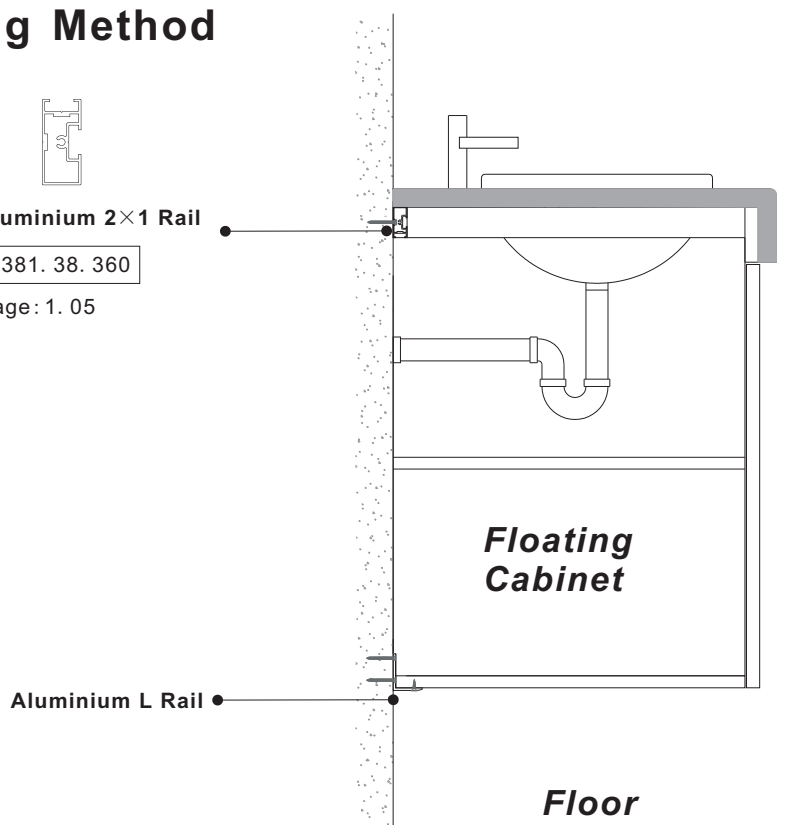
## Fixing Method



Aluminium 2×1 Rail

2381. 38. 360

Page: 1. 05

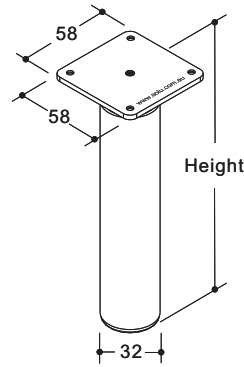


Dimensional Data not binding.  
We reserve the right to alter specifications without notice.

# Cabinet Legs

## Adjustable Leg

**Fixing plate:** zinc alloy, chrome-plated  
**Tube:** stainless steel  
**Glide:** plastic, black

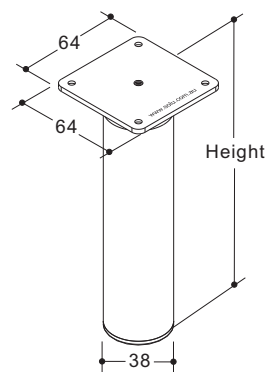


Cat No.		Height	Adjustable Range
matt brushed	mirror polished		
1120.22.080	1120.25.080	80	-5 +10
1120.22.100	1120.25.100	100	-5 +10
1120.22.120	1120.25.120	120	-5 +10
1120.22.150	1120.25.150	150	-5 +10
1120.22.200	1120.25.200	200	-5 +10
1120.22.250	1120.25.250	250	-5 +10
1120.22.300	1120.25.300	300	-5 +10

Packing: 1 and 20 pieces

## Adjustable Leg

**Fixing plate:** zinc alloy, chrome-plated  
**Tube:** stainless steel  
**Glide:** plastic, black



Cat No.		Height	Adjustable Range
matt brushed	mirror polished		
1121.22.080	1121.25.080	80	-5 +10
1121.22.100	1121.25.100	100	-5 +10
1121.22.120	1121.25.120	120	-5 +10
1121.22.150	1121.25.150	150	-5 +10
1121.22.200	1121.25.200	200	-5 +10
1121.22.250	1121.25.250	250	-5 +10
1121.22.300	1121.25.300	300	-5 +10

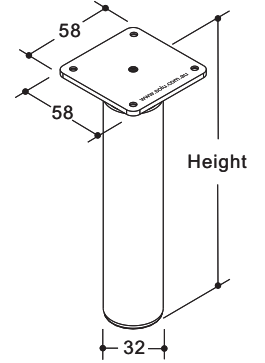
Packing: 1 and 20 pieces

Dimensional Data not binding.  
 We reserve the right to alter specifications without notice.

## Cabinet Legs

### Adjustable Leg

Fixing plate: zinc alloy,  
 Tube: aluminium, clear anodized  
 Glide: lastic, black

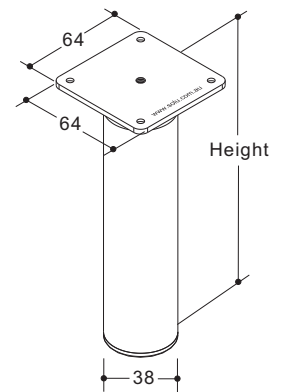


Cat No.	Height	Adjustable Range
1122.38.050	52	-5 +10
1122.38.080	80	-5 +10
1122.38.100	100	-5 +10
1122.38.120	120	-5 +10
1122.38.150	150	-5 +10
1122.38.200	200	-5 +10
1122.38.300	300	-5 +10

Packing: 1 and 20 pieces

### Adjustable Leg

Fixing plate: zinc alloy,  
 Tube: aluminium, clear anodized  
 Glide: plastic, black



Cat No.	Height	Adjustable Range
1123.38.050	52	-5 +10
1123.38.080	80	-5 +10
1123.38.100	100	-5 +10
1123.38.120	120	-5 +10
1123.38.150	150	-5 +10
1123.38.200	200	-5 +10
1123.38.300	300	-5 +10

Packing: 1 and 20 pieces

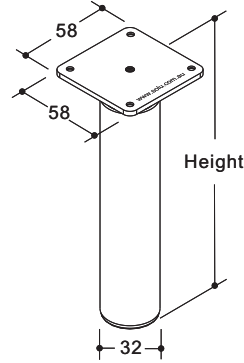
Dimensional Data not binding.  
 We reserve the right to alter specifications without notice.



# Cabinet Legs

## Adjustable Leg

Fixing plate: zinc alloy,  
 Tube: aluminium, black anodized  
 Glide: lastic, black

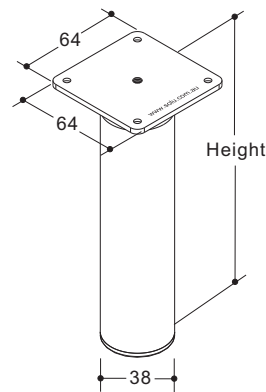


Cat No.	Height	Adjustable Range
1122.30.050	52	-5 +10
1122.30.080	80	-5 +10
1122.30.100	100	-5 +10
1120.30.120	120	-5 +10
1122.30.150	150	-5 +10

Packing: 1 and 20 pieces

## Adjustable Leg

Fixing plate: zinc alloy,  
 Tube: aluminium, black anodized  
 Glide: plastic, black



Cat No.	Height	Adjustable Range
1123.30.050	52	-5 +10
1123.30.080	80	-5 +10
1123.30.100	100	-5 +10
1123.30.120	120	-5 +10
1123.30.150	150	-5 +10

Packing: 1 and 20 pieces

Dimensional Data not binding.  
 We reserve the right to alter specifications without notice.

## Cabinet Legs

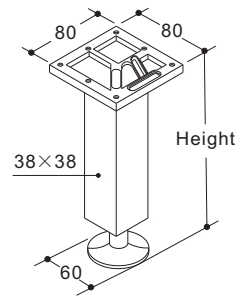


### Adjustable Leg

**Fixing plate:** zinc alloy, chrome-plated, matt  
**Tube:** aluminium, silver colour, anodized  
**Foot:** zinc alloy, satin chrome

Cat No.	Height	Adjustable Range
1124.38.080	80	-10 +10
1124.38.100	100	-10 +10
1124.38.120	120	-10 +10
1124.38.150	150	-10 +10
1124.38.200	200	-10 +10
1124.38.300	300	-10 +10
1124.38.720	720	-10 +10

Packing: 1 and 8 pieces

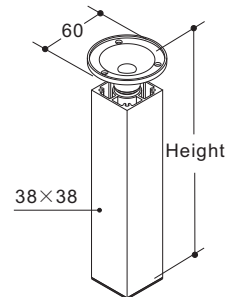


### Adjustable Leg

**Fixing plate:** zinc alloy, chrome-plated, matt  
**Tube:** aluminium, silver colour, anodized  
**Glide:** plastic, black

Cat No.	Height	Adjustable Range
1126.38.080	80	-10 +10
1126.38.100	100	-10 +10
1126.38.120	120	-10 +10
1126.38.150	150	-10 +10
1126.38.300	300	-10 +10

Packing: 1 and 20 pieces



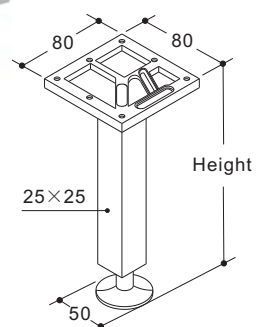
## Cabinet Legs

### Adjustable Leg

**Fixing plate:** zinc alloy, chrome-plated, matt  
**Tube:** aluminium, silver colour, anodized  
**Foot:** zinc alloy, satin chrome

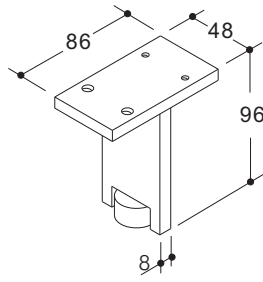
Cat No.	Height	Adjustable Range
1125.38.120	120	-10 +10
1125.38.150	150	-10 +10

Packing: 1 and 20 pieces



Dimensional Data not binding.  
 We reserve the right to alter specifications without notice.

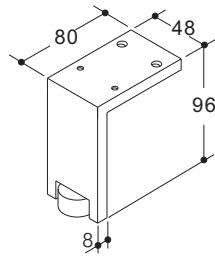
# Cabinet Legs



aluminium, silver colour, anodized

Cat No.	1127. 38. 096
---------	---------------

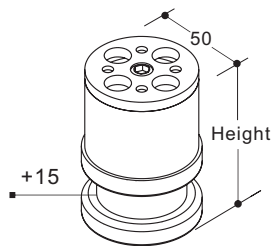
Packing: 1 and 20 pieces



aluminium, silver colour, anodized

Cat No.	1128. 38. 096
---------	---------------

Packing: 1 and 20 pieces



Fixing plate: zinc alloy, chrome-plated  
 Tube: stainless steel, black powder coated  
 Foot: black plastic

Cat No.	Height	Adjustable Range
1135. 50. 065	65	+15

Packing: 1 and 20 pieces

Dimensional Data not binding.  
 We reserve the right to alter specifications without notice.

# Bench Top Supports

Fixing plate: plastic, grey  
 Tube: stainless steel, matt brushed  
 Foot: zinc ally

Cat No.	Height	Adjustable Range
1303.22.880	880	-10 +10

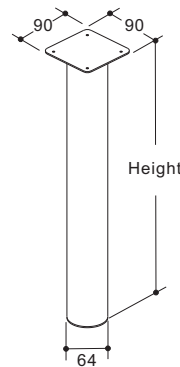
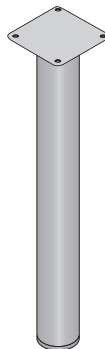
Packing: 1 piece



Fixing plate: stainless steel, polished  
 Tube: stainless steel, matt brushed  
 Foot: stainless steel, polished

Cat No.	Height	Adjustable Range
1301.22.880	880	-10 +10

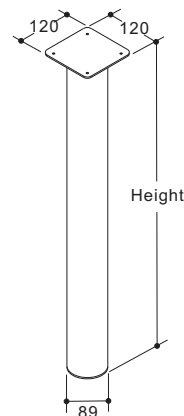
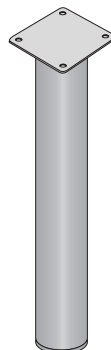
Packing: 1 piece



Fixing plate: stainless steel, polished  
 Tube: stainless steel, matt brushed  
 Foot: stainless steel, polished

Cat No.	Height	Adjustable Range
1302.22.880	880	-10 +10

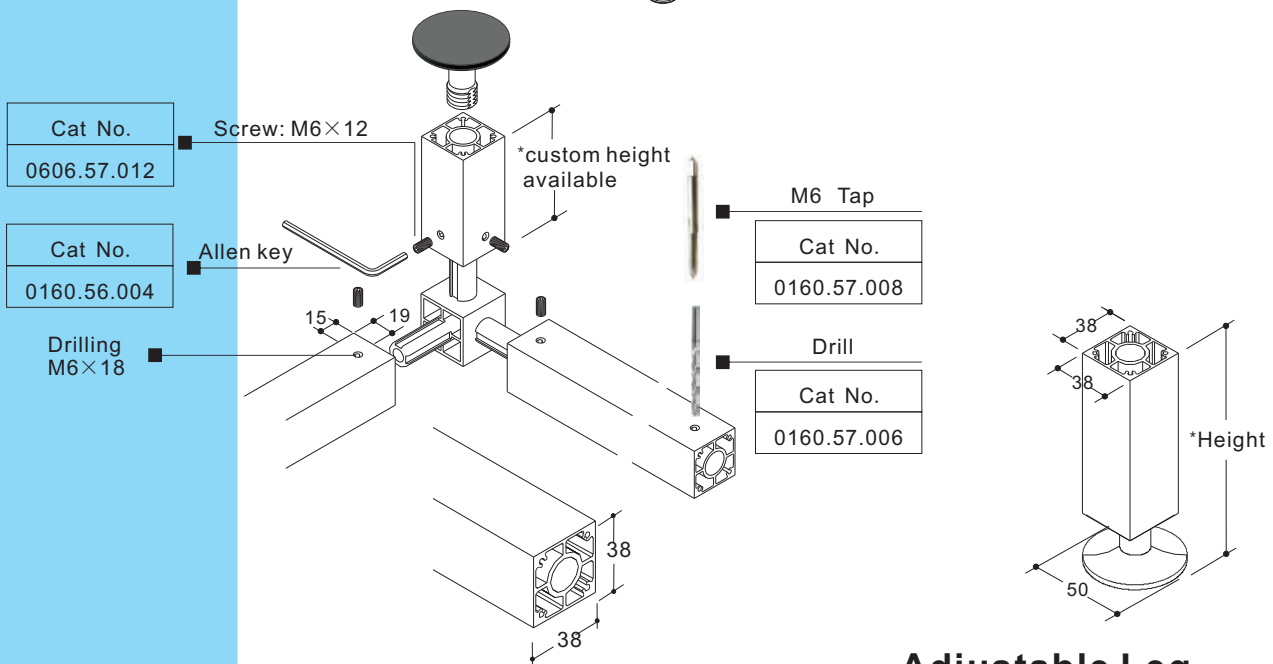
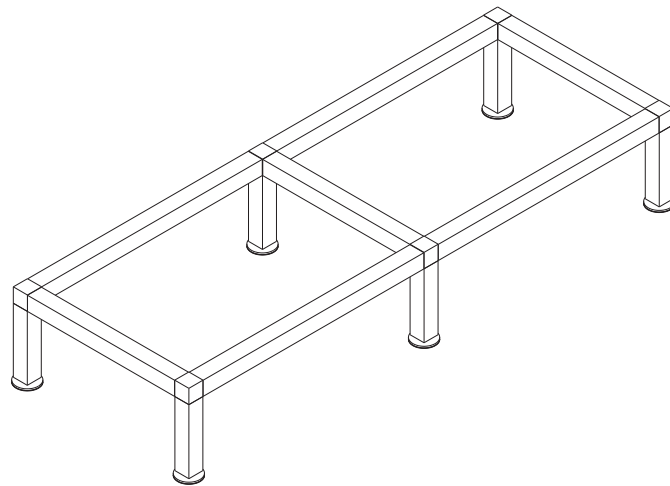
Packing: 1 piece



Dimensional Data not binding.  
 We reserve the right to alter specifications without notice.



## Cabinet Frame



Cat No.  
0606.57.012

Screw: M6×12

\*custom height available

Cat No.  
0160.56.004

Allen key

M6 Tap

Cat No.  
0160.57.008

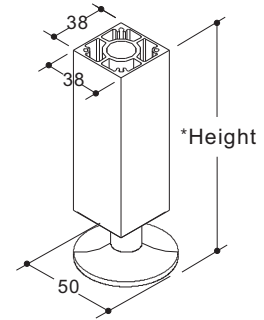
Drilling  
M6×18

15

19

Drill

Cat No.  
0160.57.006



### Aluminium Section

silver colour, anodized

Cat No.	Length (mm)
1260.38.038	2500*

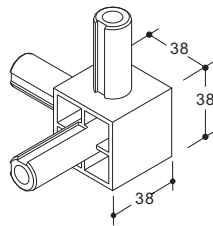
\* Usable length 2430~2470mm

### Adjustable Leg

Table: aluminium, silver anodized  
Foot: zinc alloy, chrome-plated, matt

Cat No.	Height	Adjustable Range
1260.38.300	262	-10 +10

Packing: 1 and 20 pieces

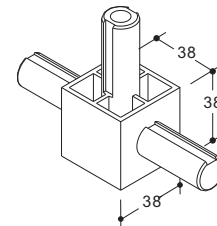


### Corner Connector

zinc alloy, chrome-plated, matt

Cat No.	1260.43.001
---------	-------------

Packing: 1 and 4 pieces



### Middle Connector

zinc alloy, chrome-plated, matt

Cat No.	1260. 43. 002
---------	---------------

Packing: 1 and 4 pieces

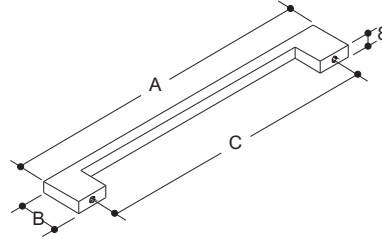
Dimensional Data not binding.  
We reserve the right to alter specifications without notice.

# Stainless Steel Handles



**matt brushed**

Cat No.	Size A×B	Size C
3201. 22. 160	182×28	160
3201. 22. 192	214×28	192
3201. 22. 288	310×28	288
3201. 22. 352	374×28	352
3201. 22. 448	470×28	448

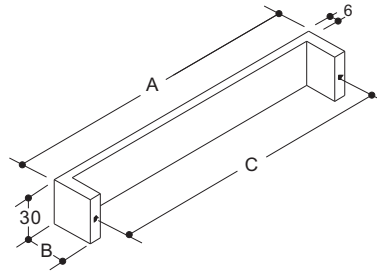


Packing: 1 and 50 pieces

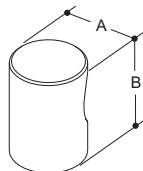


**matt brushed**

Cat No.	Size A×B	Size C
3202. 22. 192	200×28	192
3202. 22. 288	296×28	288
3202. 22. 352	360×28	352



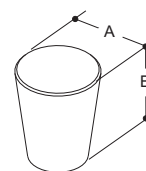
Packing: 1 and 25 pieces



**matt brushed**

Cat No.	Size A×B
3261. 22. 018	18×25
3261. 22. 022	22×26

Packing: 1 and 100 pieces.



**matt brushed**

Cat No.	Size A×B
3262. 22. 020	20×24
3262. 22. 024	24×29

Packing: 1 and 100 pieces.

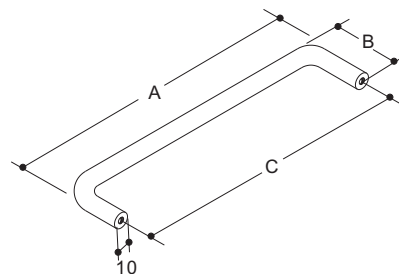
Dimensional Data not binding.  
We reserve the right to alter specifications without notice.

# Stainless Steel Handles



**matt brushed**

Cat No.	Size A×B	Size C
3235. 22. 064	74×35	64
3235. 22. 096	106×35	96
3235. 22. 128	138×40	128
3235. 22. 160	170×40	160
3235. 22. 192	202×40	192
3235. 22. 288	298×40	288
3235. 22. 352	362×40	352
3235. 22. 448	458×40	448
3235. 22. 544	554×40	544

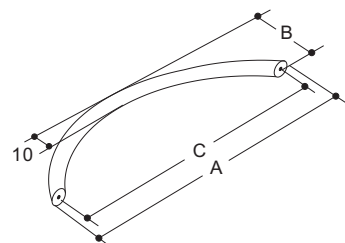


Packing: 1 and 25 pieces



**matt brushed**

Cat No.	Size A×B	Size C
3237. 22. 064	74×28	64
3237. 22. 096	114×32	96
3237. 22. 128	156×34	128
3237. 22. 160	195×34	160
3237. 22. 192	229×37	192
3237. 22. 288	332×42	288
3237. 22. 352	414×42	352
3237. 22. 448	504×50	448



Packing: 1 and 25 pieces.

Dimensional Data not binding.  
We reserve the right to alter  
specifications without notice.

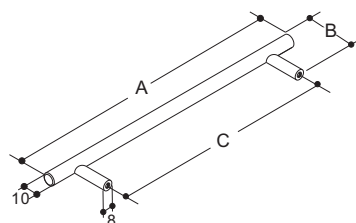
# Stainless Steel Handles

Solu



**matt brushed**

Cat No.	Size A×B	Size C
3230. 22. 096	136×35	96
3230. 22. 128	168×35	128
3230. 22. 160	200×35	160
3230. 22. 192	232×35	192
3230. 22. 288	328×35	288
3230. 22. 352	392×35	352
3230. 22. 448	488×35	448
3230. 22. 544	584×35	544

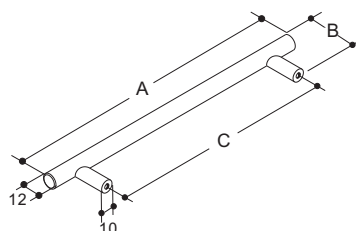


Packing: 1 and 25 pieces.



**matt brushed**

Cat No.	Size A×B	Size C
3231. 22. 096	136×35	96
3231. 22. 128	168×35	128
3231. 22. 160	200×35	160
3231. 22. 192	232×35	192
3231. 22. 288	328×35	288
3231. 22. 352	392×35	352
3231. 22. 448	488×35	448
2331. 22. 544	584×35	544
3231. 22. 640	680×35	640
3231. 22. 736	776×35	736



Packing: 1 and 25 pieces.

FURNITURE HANDLES

Dimensional Data not binding.  
We reserve the right to alter specifications without notice.

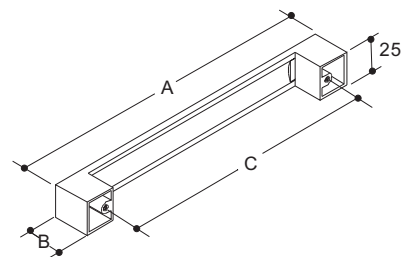
## Zinc Alloy Handles



**zinc alloy, brushed**

Cat No.	Size A×B	Size C
3301. 42. 192	225×26	192

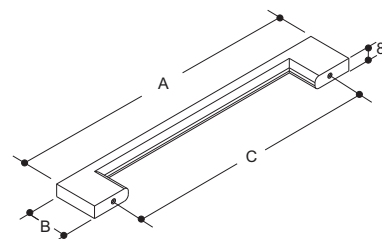
Packing: 1 and 25 pieces



**zinc alloy, brushed**

Cat No.	Size A×B	Size C
3302. 42. 096	124×28	96
3302. 42. 128	156×28	128
3302. 42. 160	188×28	160
3302. 42. 192	220×28	192
3302. 42. 256	284×28	256

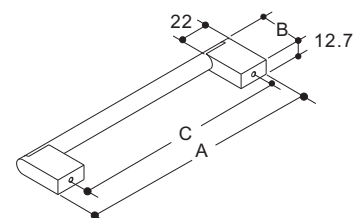
Packing: 1 and 25 pieces



**Base: zinc alloy, matt brushed  
Pull: stainless steel, matt brushed**

Cat No.	Size A×B	Size C
3303. 42. 128	148×33	128
3303. 42. 320	340×33	320

Packing: 1 and 25 pieces



**zinc alloy, chrome-plated, matt**

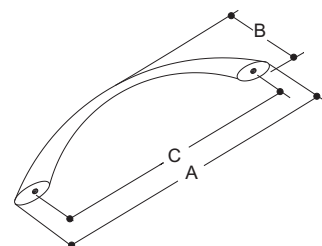
Cat No.	Size A×B	Size C
3305. 43. 096	114×28	96
3305. 43. 128	148×30	128



**zinc alloy, chrome-plated, polished**

Cat No.	Size A×B	Size C
3305. 44. 096	114×28	96
3305. 44. 128	148×30	128

Packing: 1 and 25 pieces



Dimensional Data not binding.  
We reserve the right to alter specifications without notice.

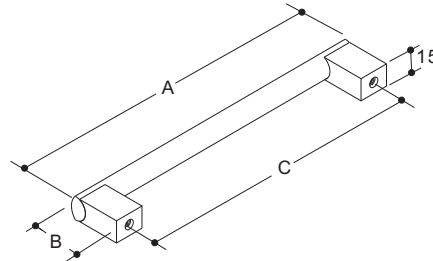


# Aluminium Handles



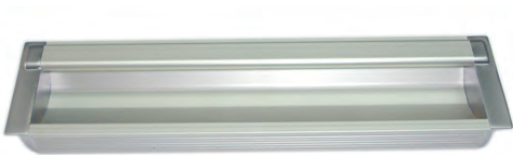
aluminium, sand blasted, anodized

Cat No.	Size A×B	Size C
3410. 39. 128	148×36	128
3410. 39. 160	180×36	160
3410. 39. 192	212×36	192
3410. 39. 288	308×36	288
3410. 39. 352	372×36	352
3410. 39. 448	468×36	448
3410. 39. 544	564×36	544
3410. 39. 640	660×36	640
3410. 39. 736	756×36	736



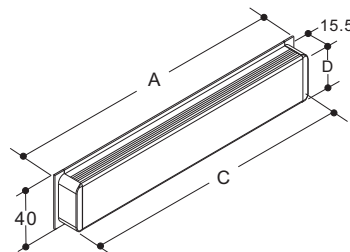
Packing: 1 and 25 pieces

## Recessed Handle



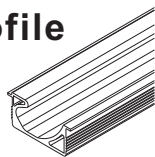
Handle profile: silver colour, anodized  
End cap: zinc alloy, satin chrome

Cat No.	Size A×D	Size C
3411. 38. 190	189×36	183



## Extrusion Handle Profile

aluminium, clear, anodised

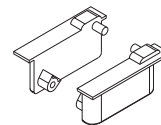


Cat No.	Length
3411.38.001	2500*

\* Usable length 2430~2470mm

## End Cap

zinc alloy, chrome-plated, matt

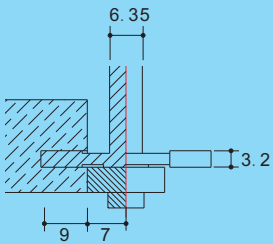
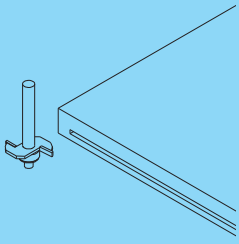


Cat No.	3411.43.002
---------	-------------

Dimensional Data not binding.  
We reserve the right to alter specifications without notice.

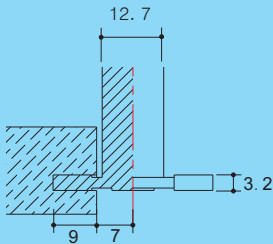
## Aluminium Edge Profiles

### Router Bit



3.2mm slot bit 1/4" Shank  
32mm diameter with bearing

Cat No. 0140.15.032



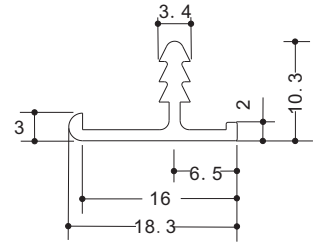
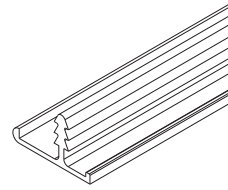
3.2mm slot bit 1/2" Shank  
32mm diameter no bearing  
for CNC

Cat No. 0141.00.032

### 3mm Wrapped Edge For 16mm board

aluminium anodized

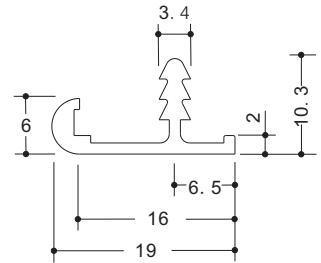
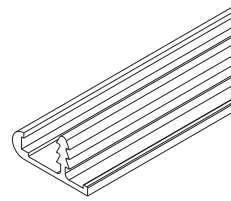
Cat No.	Length (mm)	Finish
4131.39.016	2500*	black
4131.38.016	2500*	clear
4131.38.016.30	3000	clear



### 6mm Wrapped Edge For 16mm board

aluminium anodized

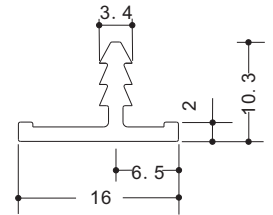
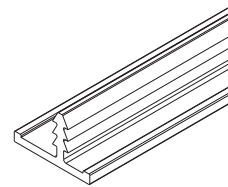
Cat No.	Length (mm)	Finish
4132.39.016	2500*	black
4132.38.016	2500*	clear
4132.38.016.30	3000	clear



### 2mm Flush Edge For 16mm board

aluminium anodized

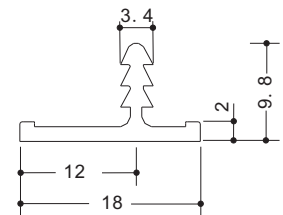
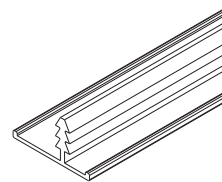
Cat No.	Length (mm)	Finish
4268.39.016	2500*	black
4268.38.016	2500*	clear



### 2mm Flush Edge For 18mm board

aluminium anodized

Cat No.	Length (mm)	Finish
4268.39.018	2500*	black
4268.38.018	2500*	clear
4268.38.018.30	3000	clear



Dimensional Data not binding.  
We reserve the right to alter  
specifications without notice.

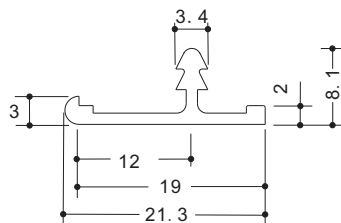
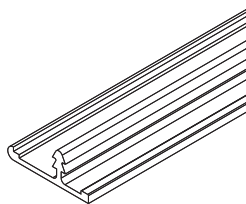
# Aluminium Edge Profiles

Solu

## 3mm Wrapped Edge For 19mm board

aluminium anodized

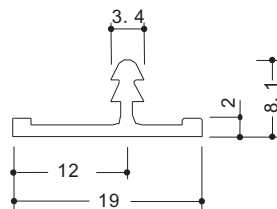
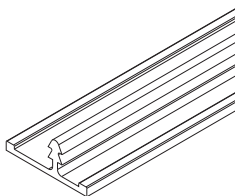
Cat No.	Length (mm)	Finish
4131.39.019	2500*	black
4131.38.019	2500*	clear
4131.38.019.30	3000	clear



## 2mm Flush Edge For 19mm board

aluminium anodized

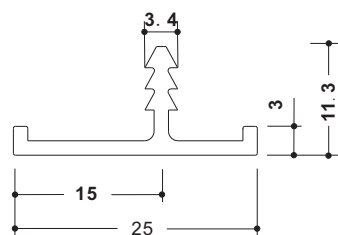
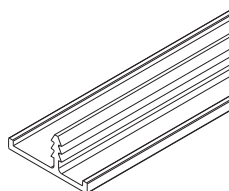
Cat No.	Length (mm)	Finish
4268.39.019	2500*	black
4268.38.019	2500*	clear



## 3mm Flush Edge For 25mm board

aluminium anodized

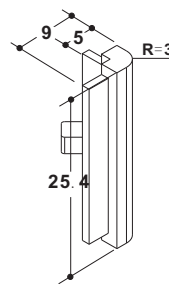
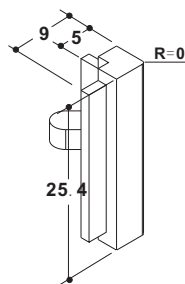
Cat No.	Length (mm)	Finish
4268.39.025	3700*	black
4268.38.025	3700*	clear



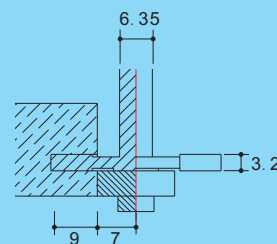
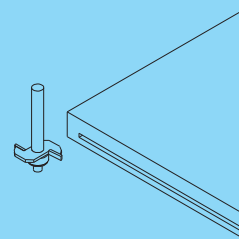
## 25mm Edge Corner

zinc alloy, plated

Cat No.	R	Finish
4268.39.001	0	black
4268.43.002	0	satin chrome
4268.39.002	3	black
4268.43.002	3	satin chrome

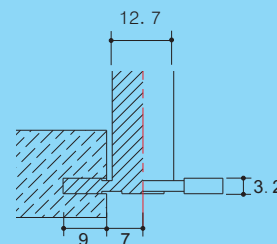


## Router Bit



3.2mm slot bit 1/4"Shank  
32mm diameter with bearing

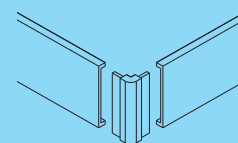
Cat No. 0140.15.032



3.2mm slot bit 1/2"Shank  
32mm diameter no bearing  
for CNC

Cat No. 0141.00.032

ALUMINIUM DOOR AND EDGE PROFILES



Dimensional Data not binding.  
We reserve the right to alter  
specifications without notice.

\* Usable length 2430~2470mm

\*\* Usable length 3630~3670mm

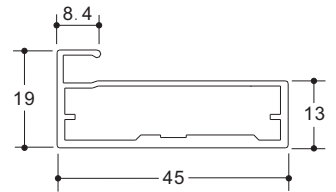
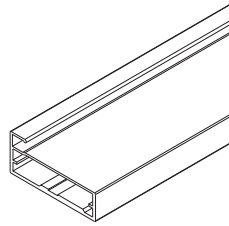
## 19mm Aluminium Frame Door Profile

### Glass Door Frame

silver colour, anodized  
use 4mm glass only

Cat No.	Length(mm)
8202. 38. 045	2400*

Packing: 6pcs per carton \* Usable length 3030-3070mm



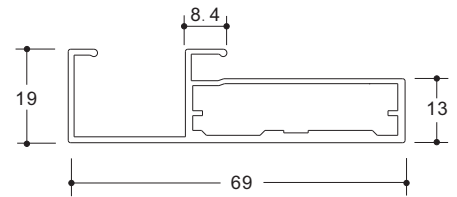
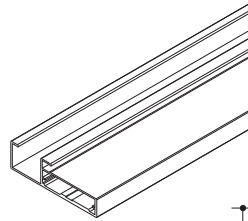
### Glass Door Frame

with handle, use to up-flap door  
suit to 8202. 38. 045

silver colour, anodized  
use 4mm glass only

Cat No.	Length(mm)
8202. 38. 069	3100*

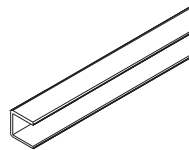
Packing: 6pcs per carton \* Usable length 3030-3070mm



### Sealing Strip

plastic for glass

Cat No.	8202. 80. 002
---------	---------------

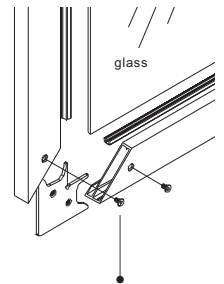
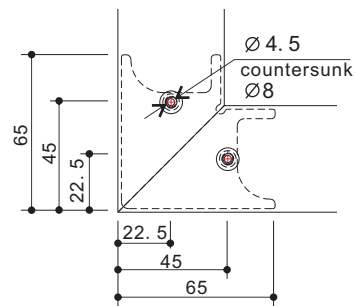
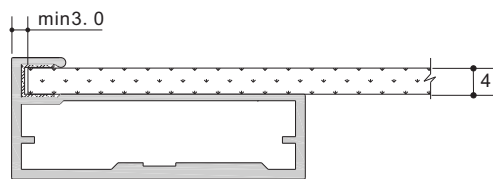


### Fixing Plate

steel, zinc-plated

Cat No.	8200. 57. 001
---------	---------------

### Fixing Method:



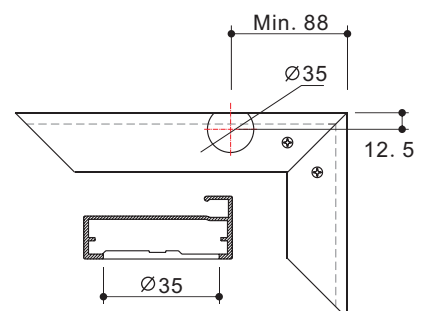
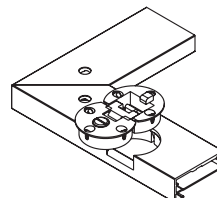
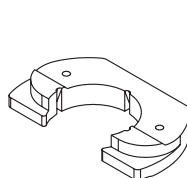
Note: glass edge needs to be chamfered

Cat No.
8200.57.003

### Flap Hinge Mounting Block

nylon, black

Cat No.	8202. 80. 003
---------	---------------



Dimensional Data not binding.  
We reserve the right to alter specifications without notice.

# Soft Down Stay

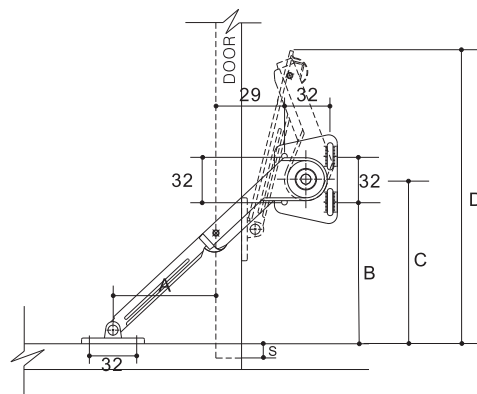
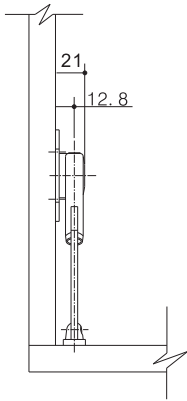
## Soft Down Stay

for use with downward-opening flaps, flap 90°  
zinc alloy, steel, bright nickel



Cat No.	Direction
8321.46.001	left
8321.46.002	right

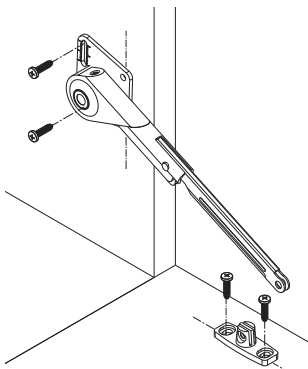
Packing: 1 and 20 pieces



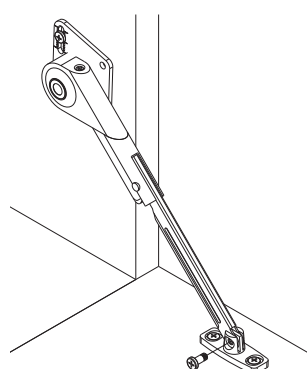
	A	B	C	D
Drop Hinge	97	106-S	122-S	211-S
Single Knuckle Hinge	90	99	115	204

**note:** "s" dimension is the overlay distance for drop hinge(s)

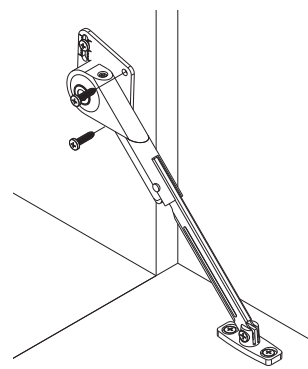
## Fixing Method:



Step 1



Step 2



Step 3

Dimensional Data not binding.  
We reserve the right to alter specifications without notice.



# Flap Hinge

## Hinge For Flap Doors

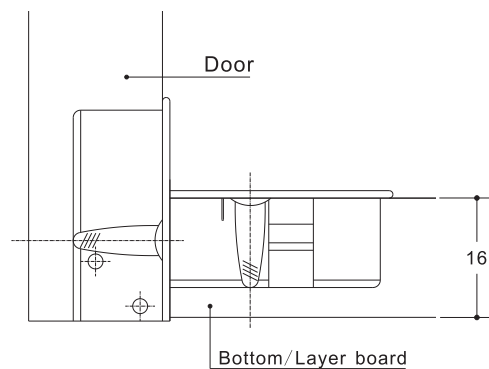
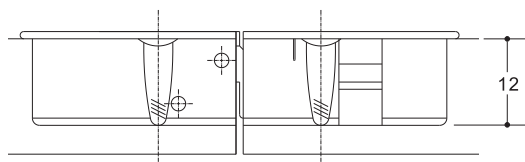
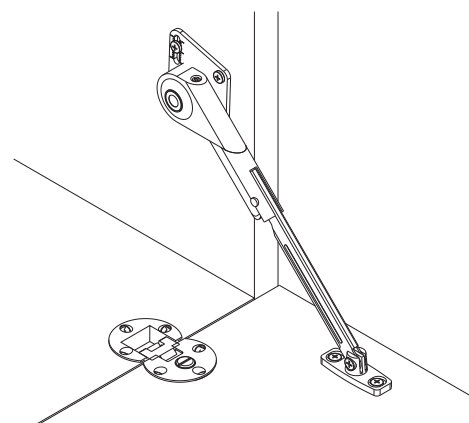
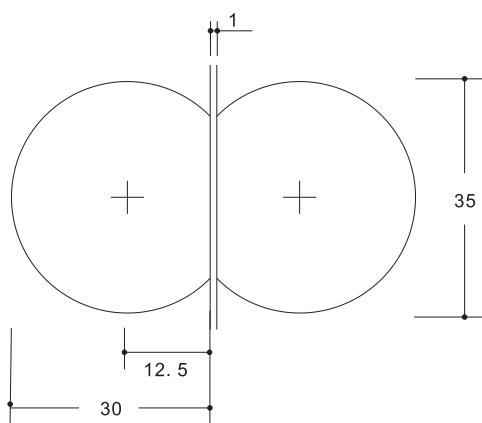
zinc alloy, nickel-plated

Cat No.	8410. 46. 035
---------	---------------

Packing: 1 and 250 pieces



## Fixing Method

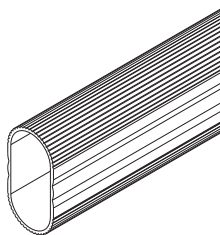


Dimensional Data not binding.  
We reserve the right to alter specifications without notice.

# Wardrobe Fittings

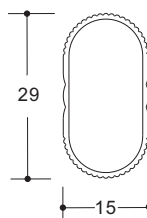
## Oval Wardrobe Rail

aluminium, silver colour, anodized



Cat No.	Length (mm)
8101. 38. 015	3100*

\* Usable length 3030-3070mm



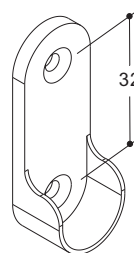
## Wardrobe Rail Support

zinc alloy, nickel-plated



Cat No.	8101. 46. 001
---------	---------------

Packing: 1 and 50 pieces

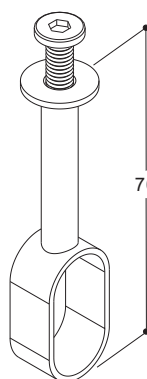


## Wardrobe Rail Centre Support

zinc alloy, nickel-plated

Cat No.	8101. 46. 002
---------	---------------

Packing: 1 and 50 pieces



Dimensional Data not binding.  
We reserve the right to alter specifications without notice.

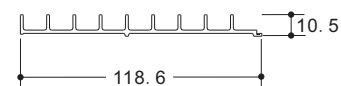
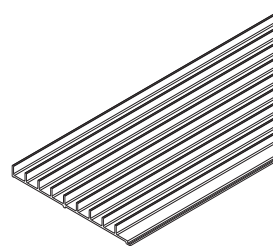
## CD/DVD Racks For Drawers

### CD Rack

aluminium, silver colour, anodized

Cat No.	Length (mm)
8108. 38. 118	2500*

Packing: 4pcs per carton

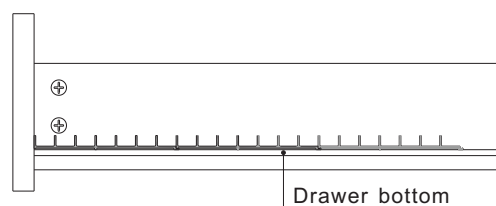
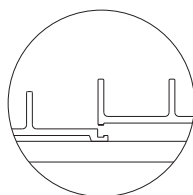
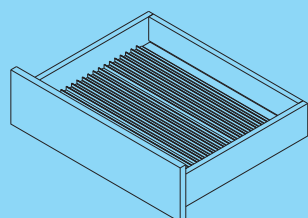
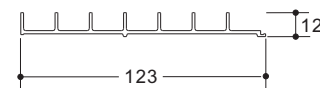
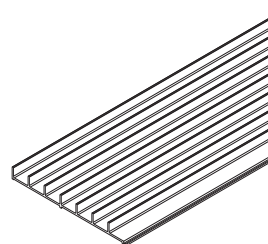


### DVD Rack

aluminium, silver colour, anodized

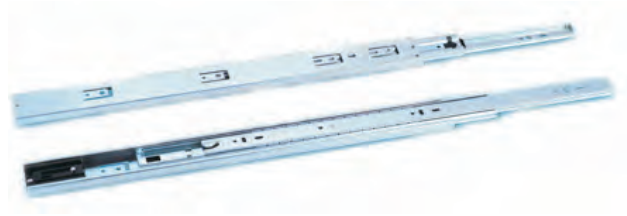
Cat No.	Length (mm)
8109. 38. 123	2500*

Packing: 4pcs per carton



Dimensional Data not binding.  
We reserve the right to alter specifications without notice.

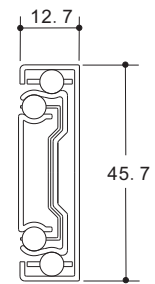
## Drawer Runner



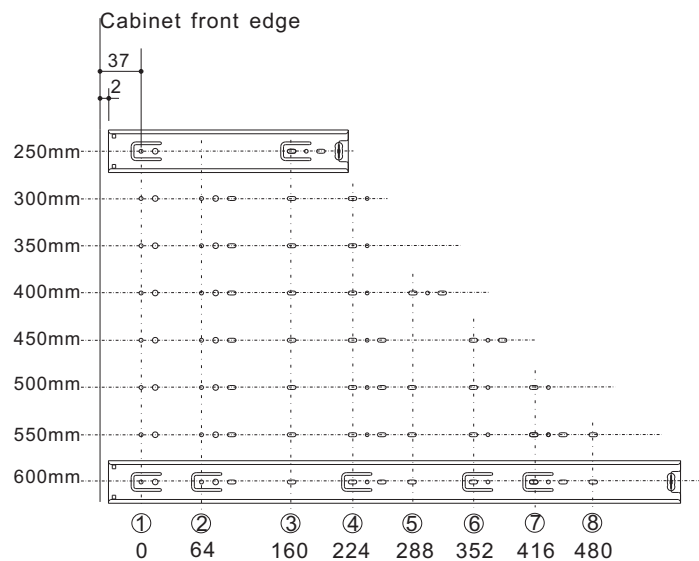
### Full Extension Ball Cage Runner

steel, galvanized bright

Cat No.	Length
8521. 57. 250	250
8521. 57. 300	300
8521. 57. 350	350
8521. 57. 400	400
8521. 57. 450	450
8521. 57. 500	500
8521. 57. 550	550
8521. 57. 600	600



Packing: 15 pairs per carton



Dimensional Data not binding.  
We reserve the right to alter specifications without notice.

## SOLU HARDWARE

Tel: (02) 9139 6727 Mobile: 0417 668 684

[www.soluhardware.com.au](http://www.soluhardware.com.au) E-mail: [sales@soluhardware.com.au](mailto:sales@soluhardware.com.au)